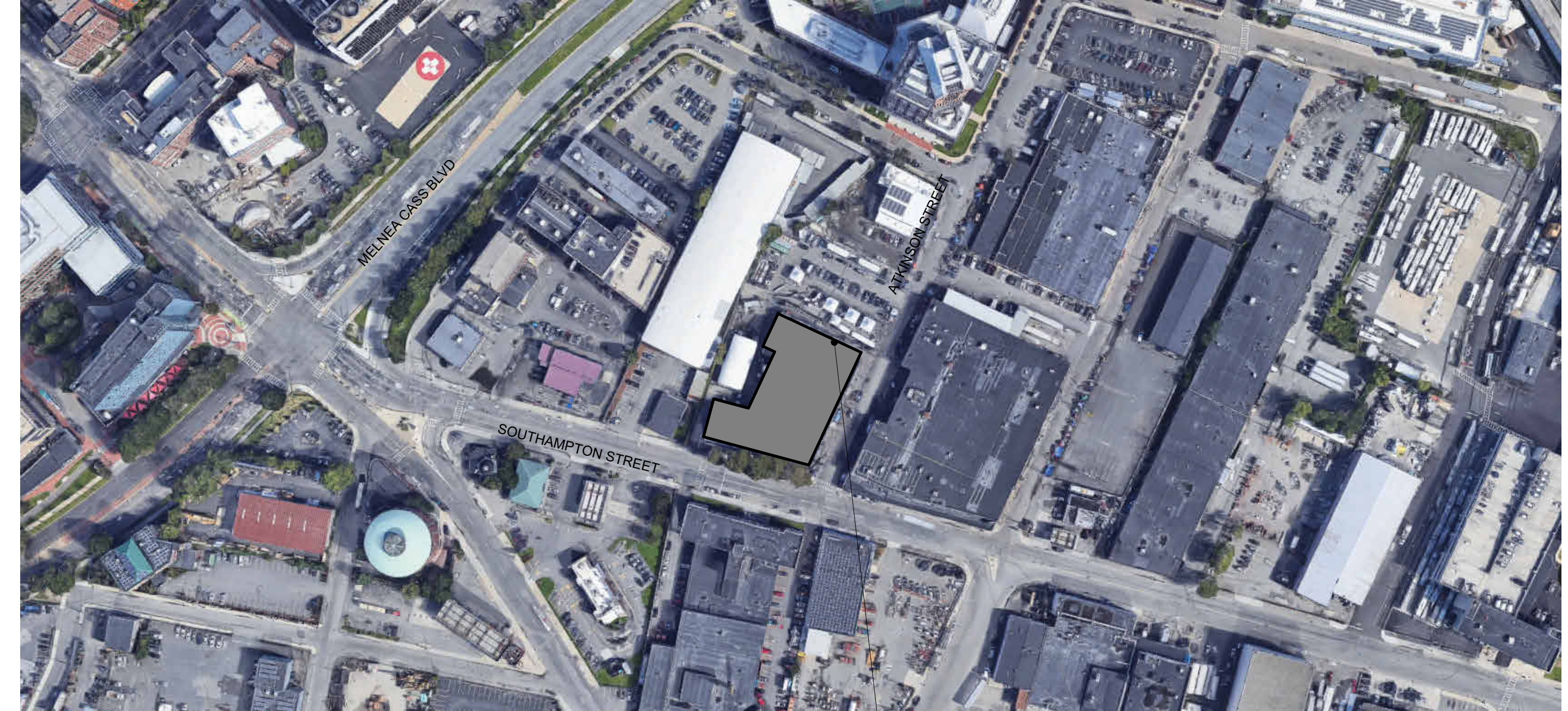
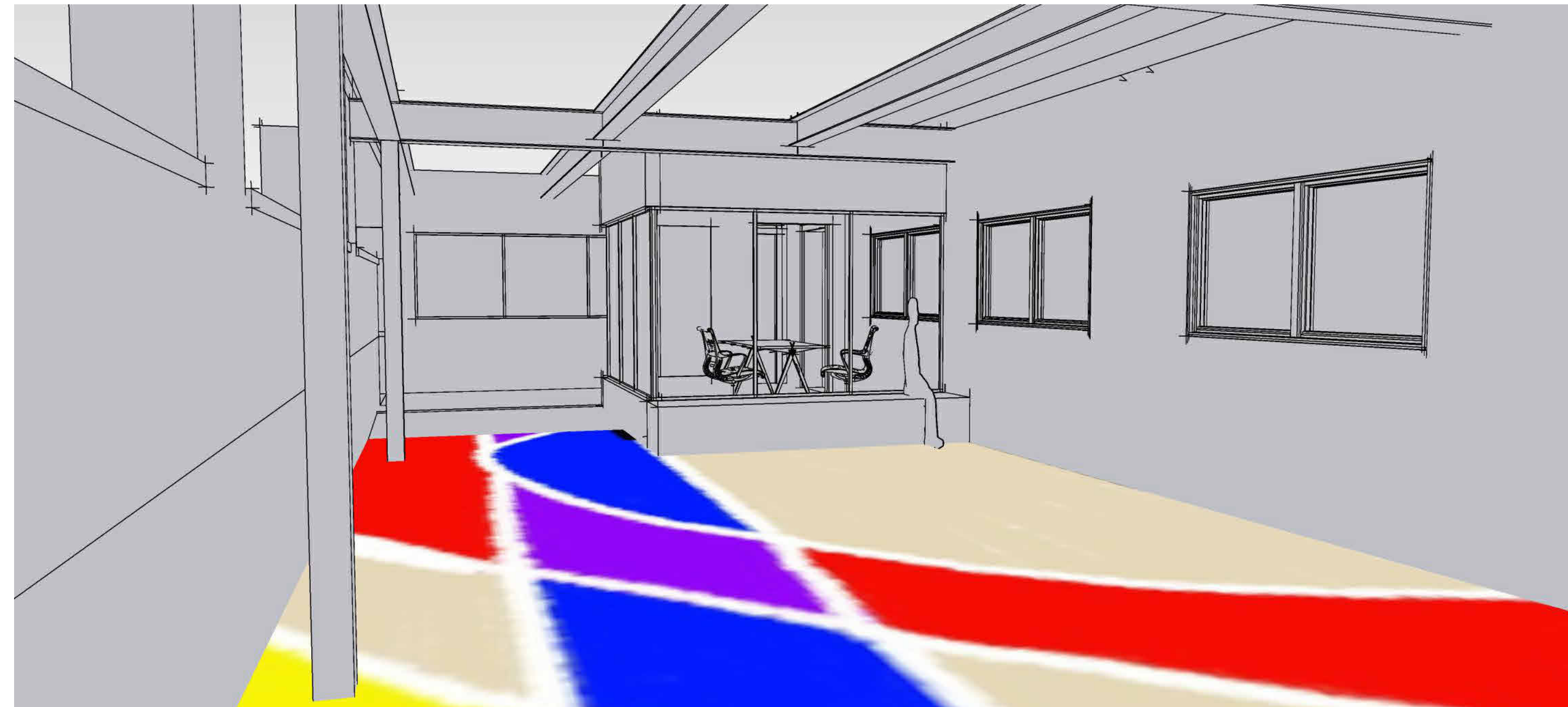




BOSTON PUBLIC HEALTH COMMISSION

112 Southampton Street Entryway Interior Renovation



PROJECT SITE

GENERAL NOTES:

1. THE GENERAL CONTRACTOR (GC OR CONTRACTOR) SHALL PERFORM ALL WORK IN ACCORDANCE WITH THE 9TH EDITION OF THE MA STATE BUILDING CODE (IBC 2015 WITH MA AMENDMENTS) AND ALL OTHER APPLICABLE CODES AND LOCAL ORDINANCES.
2. GC IS RESPONSIBLE FOR COORDINATING ALL WORK FOR ALL PROJECT REQUIREMENTS. IT IS THE RESPONSIBILITY OF THE GC TO COORDINATE THE SCOPE AND NATURE OF THE WORK REQUIRED FOR A COMPLETE INSTALLATION FROM THE INFORMATION PROVIDED IN THE DRAWINGS, NOTES AND PROJECT MANUAL.
3. CONTRACTOR SHALL FIELD VERIFY ALL DIMENSIONS & CONDITIONS PRIOR TO BEGINNING ANY WORK.
4. DO NOT SCALE DRAWINGS. ANY DEVIATIONS SHALL BE BROUGHT TO THE ATTENTION OF THE ARCHITECT. ALL DEVIATIONS AND DISCREPANCIES SHALL BE CORRECTED BY THE CONTRACTOR PRIOR TO COMMENCEMENT OF A PORTION OF THE WORK.
5. SELECTIVE DEMOLITION: IT IS THE RESPONSIBILITY OF THE GC TO DETERMINE THE SCOPE AND NATURE OF EXISTING MATERIALS, EQUIPMENT AND FINISHED REQUIRED FOR REMOVAL, REPLACEMENT OR SALVAGE.
6. CUTTING AND PATCHING COORDINATION: THE GC IS RESPONSIBLE FOR COORDINATION OF ALL CUTTING AND PATCHING NECESSARY FOR THE COMPLETION OF THE WORK AND FOR THE QUALITY AND APPEARANCE OF ALL PATCH WORK IN EXPOSED-TO-VIEW FINISHED MATERIALS. FULLY INTEGRATE WITH EXISTING AND NEW CONSTRUCTION. ALL CUTTING, ALTERATIONS AND PATCHING, TO PRESENT THE VISUAL APPEARANCE OF AN ENTIRE, COMPLETED, AND UNIFIED PROJECT.
7. ALL WALLS, PARTITION AND CEILING AREAS NOT COVERED BY OTHER FINISHES SHALL BE PAINTED. PAINT TRIMS, BASEBOARDS, AND DOORS PER SCHEDULE. REFINISH SURFACES TO MATCH ADJECENT FINISHES UNLESS OTHERWISE NOTED. CONDITIONS NOT SPECIFICALLY SHOWN SHOULD MATCH EXISTING CONDITIONS.

DRAWING INDEX

ARCHITECTURAL

SHEET #	SHEET TITLE
A000	COVER SHEET
A100	DEMO PLAN, FLOOR PLAN
A101	ENLARGED PLAN & FURNITURE, RCP
A200	INTERIOR ELEVATIONS
A201	INTERIOR ELEVATIONS
A300	PARTITIONS, FINISH SCHEDULE
A400	EXTERIOR DETAILS
A500	IMAGERY

ELECTRICAL

E001	GENERAL SHEET
E100	FIRST FLOOR - DEMOLITION PLAN
E101	FIRST FLOOR - POWER AND LIGHTING PLAN
E600	SPECIFICATIONS



Leonardi Aray Architects

BID DOCUMENTS
06.23.2023



Leonardi Aray Architects
 1035 Cambridge Street, Suite 1
 Cambridge, MA 02141
 p: 617.270.3912
 www.larayarchitects.com

CONSULTANTS



PROJECT

112 Southampton Entryway Interior Renovation

Project Status: BID DOCUMENTS
 Issue Date: 06/23/2023
 File: LAA/Projects/2113
 Drawn by: LAA
 Checked by: LA

CLIENT

Boston Public Health Commission

STAMP



06/23/12

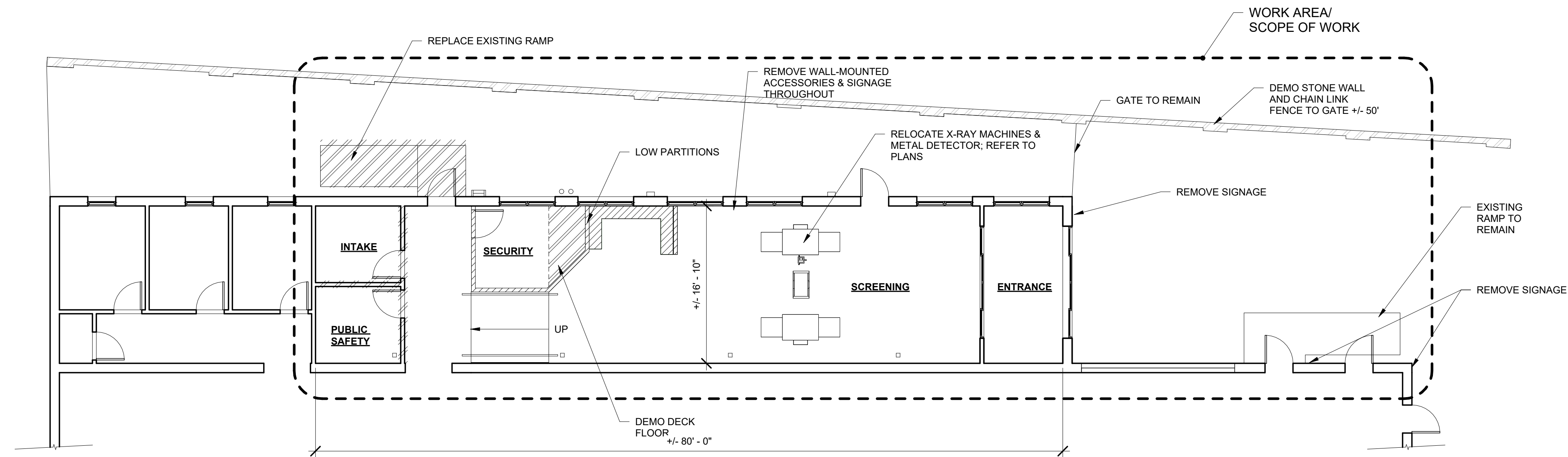
REVISIONS

NO.	Date	Description
-----	------	-------------

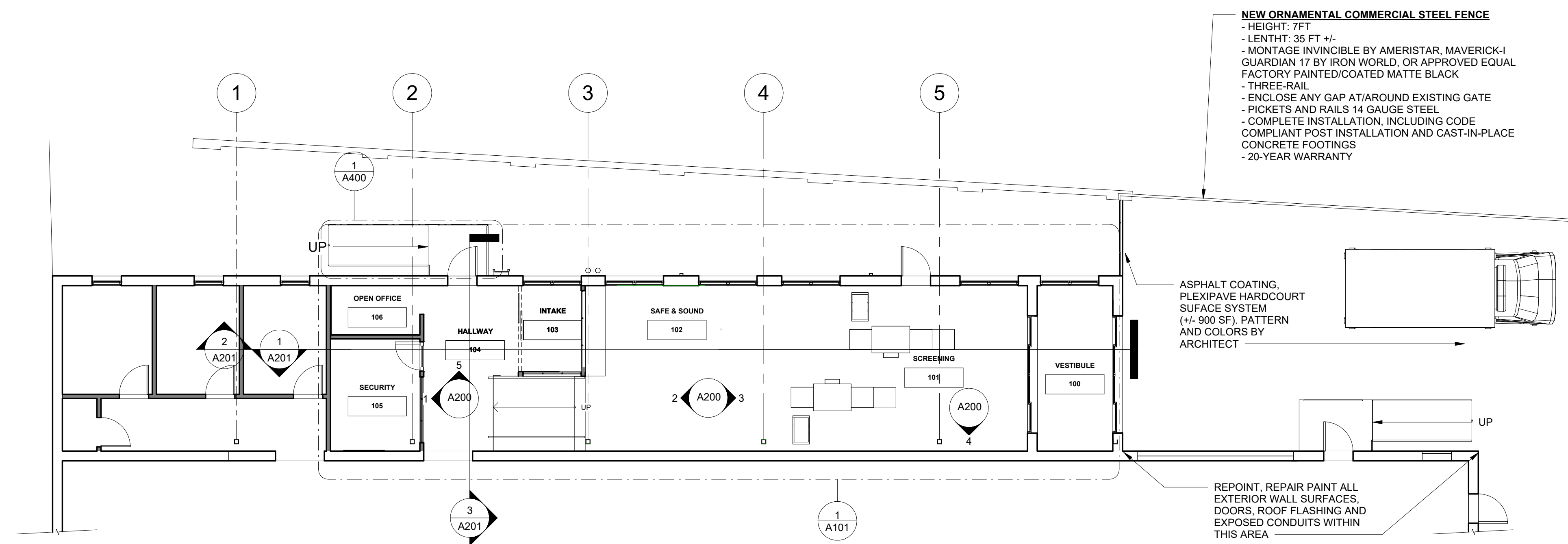
SHEET TITLE

DEMO PLAN, FLOOR PLAN

A100



① DEMOLITION PLAN
 1/8" = 1'-0"



② FIRST FLOOR PLAN
 1/8" = 1'-0"

LEGEND:

- EXISTING
- DEMO
- NEW

OUTLINE SCOPE OF WORK:

1. INSTALL NEW FLOORING THROUGHOUT WORK AREA
2. RELOCATE EXISTING X-RAY MACHINES
3. NEW EXTERIOR REAR RAMP & FENCE
4. NEW FURNITURE, INCLUDING GERI CHAIRS AND FOLDING TABLES
5. PAINTING
6. NEW CEILING CLOUDS
7. NEW SEMI-ENCLOSED INTAKE
8. NEW PARTITIONS AND GLAZING
9. INSTALL GRAPHICS & SIGNAGE
10. RECONFIGURE SECURITY ROOM
11. RELOCATE EXISTING X-RAYS MACHINE AND NEW METAL DETECTOR (PMD2 Plus purchased by owner)
12. ASPHALT PRINTING AT ENTRANCE



Leonardi Aray Architects
 1035 Cambridge Street, Suite 1
 Cambridge, MA 02141
 p: 617.270.3912
 www.larayarchitects.com

CONSULTANTS



PROJECT

112 Southampton Entryway Interior Renovation

Project Status: BID DOCUMENTS
 Issue Date: 06/23/2023
 File: LAA/Projects/2113
 Drawn by: LAA
 Checked by: LA

CLIENT

Boston Public Health Commission

STAMP



REVISIONS

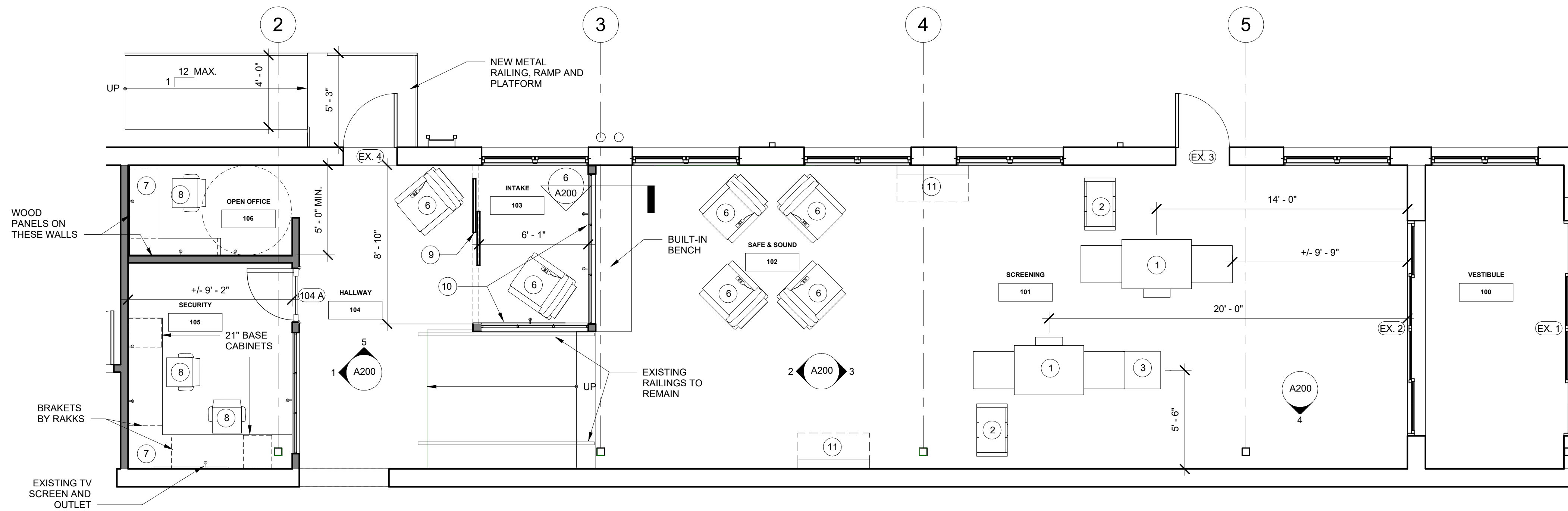
NO.	Date	Description
-----	------	-------------

SHEET TITLE

ENLARGED PLAN FURNITURE, RCP

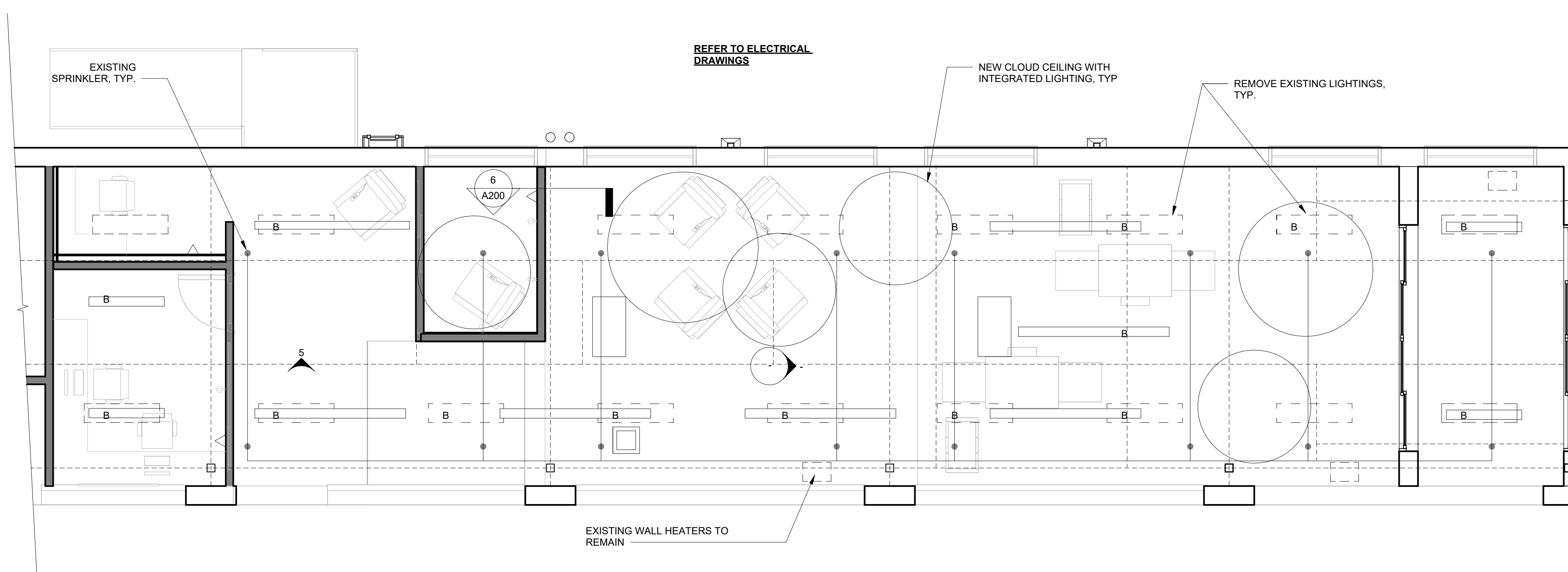
A101

- LEGEND:**
- 1 EXISTING X-RAY MACHINE
 - 2 (1) EXISTING & (1) NEW METAL DETECTOR BY OWNER
 - 3 NEW EXTENSION TABLE
 - 4 NOT USED
 - 5 NOT USED
 - 6 NEW GERI CHAIR
 - 7 NEW HIGH PRESSURE LAMINATE SURFACE WITH TRIM EDGE, 1" THICK PLYWOOD BASE, DEPTH: 24". PROVIDE ALL SUPPORTS NEEDED AGAINST WALL AND RAKKS BRACKETS.
 - 8 NEW CHAIRS
 - 9 NEW (2) 3' X 7' PRIVACY SLIDING SOLID PANELS (FLUSH STEEL DOORS). HARDWARE: SERIES POCKET, HEAVY DUTY BY HAGER OR EQUAL.
 - 10 WALLS WITH WOOD PANELS
 - 11 NEW WALL-MOUNTED FOLDING TABLES
- DOOR 104A:** STEEL DOOR AND FRAME, FULL LIGHT, FROSTED CRYSTAL FILM BY 3M OR APPROVED EQUAL APPLIED INSIDE SECURITY ROOM.
- DOORS EX. 4, EX 3 TO BE PAINTED, FRAMES INCLUDED**
- ALLOWANCE FOR FURNITURE: \$20,000**



1 FLOOR PLAN
 1/4" = 1'-0"

- LEGEND:**
- B: NEW FIXTURE
 - SPRINKLER HEAD (EXISTING)
 - CLOUD CEILING INTEGRATED LIGHTING



2 REFLECTED CEILING PLAN
 1/4" = 1'-0"



Leonardi Aray Architects
 1035 Cambridge Street, Suite 1
 Cambridge, MA 02141
 p: 617.270.3912
 www.larayarchitects.com

CONSULTANTS



PROJECT

112 Southampton Entryway Interior Renovation

Project Status: BID DOCUMENTS
 Issue Date: 06/23/2023
 File: LAA/Projects/2113
 Drawn by: LAA
 Checked by: LA

CLIENT

Boston Public Health Commission

STAMP



06/23/12

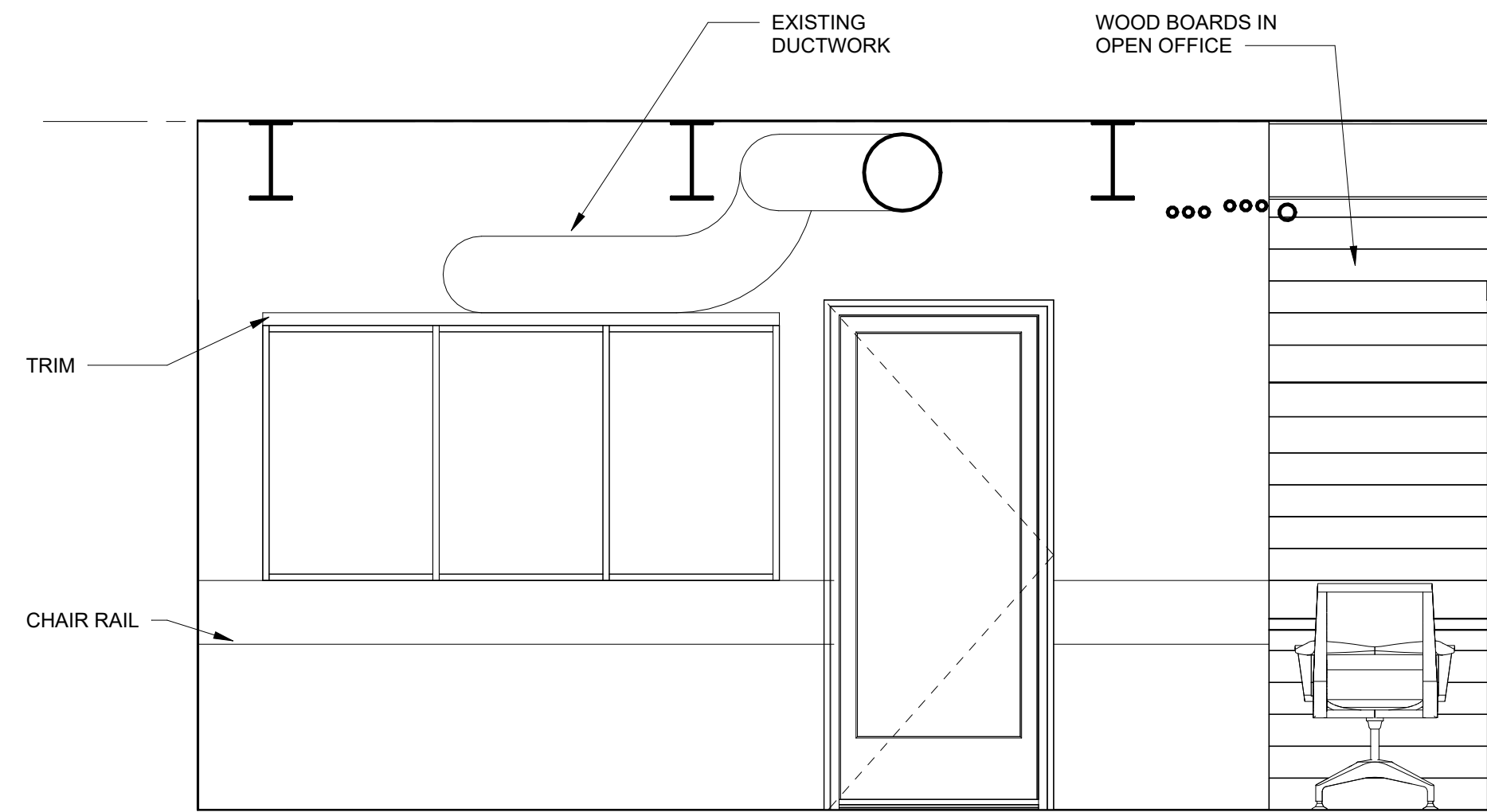
REVISIONS

NO.	Date	Description
-----	------	-------------

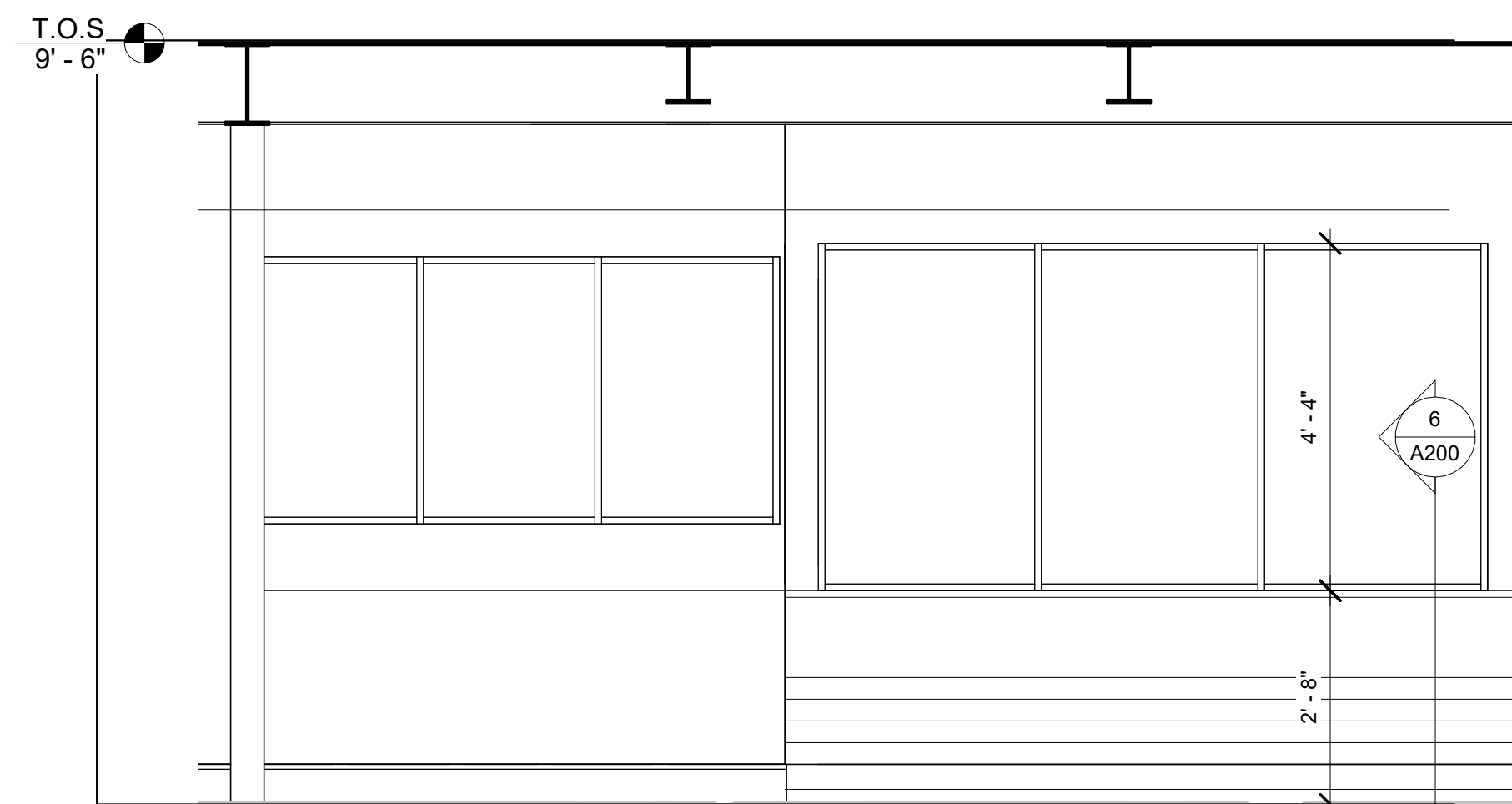
SHEET TITLE

INTERIOR ELEVATIONS

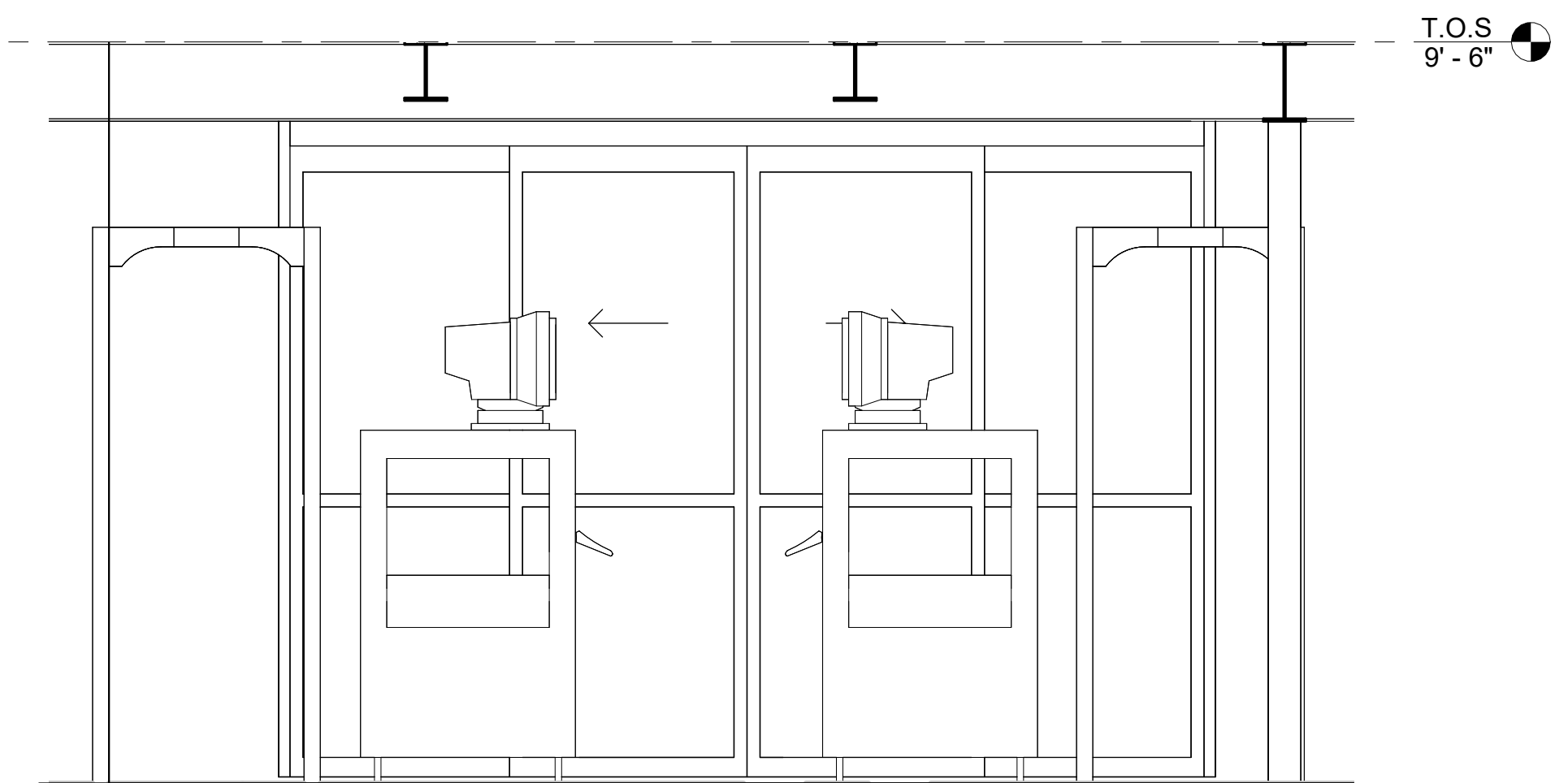
A200



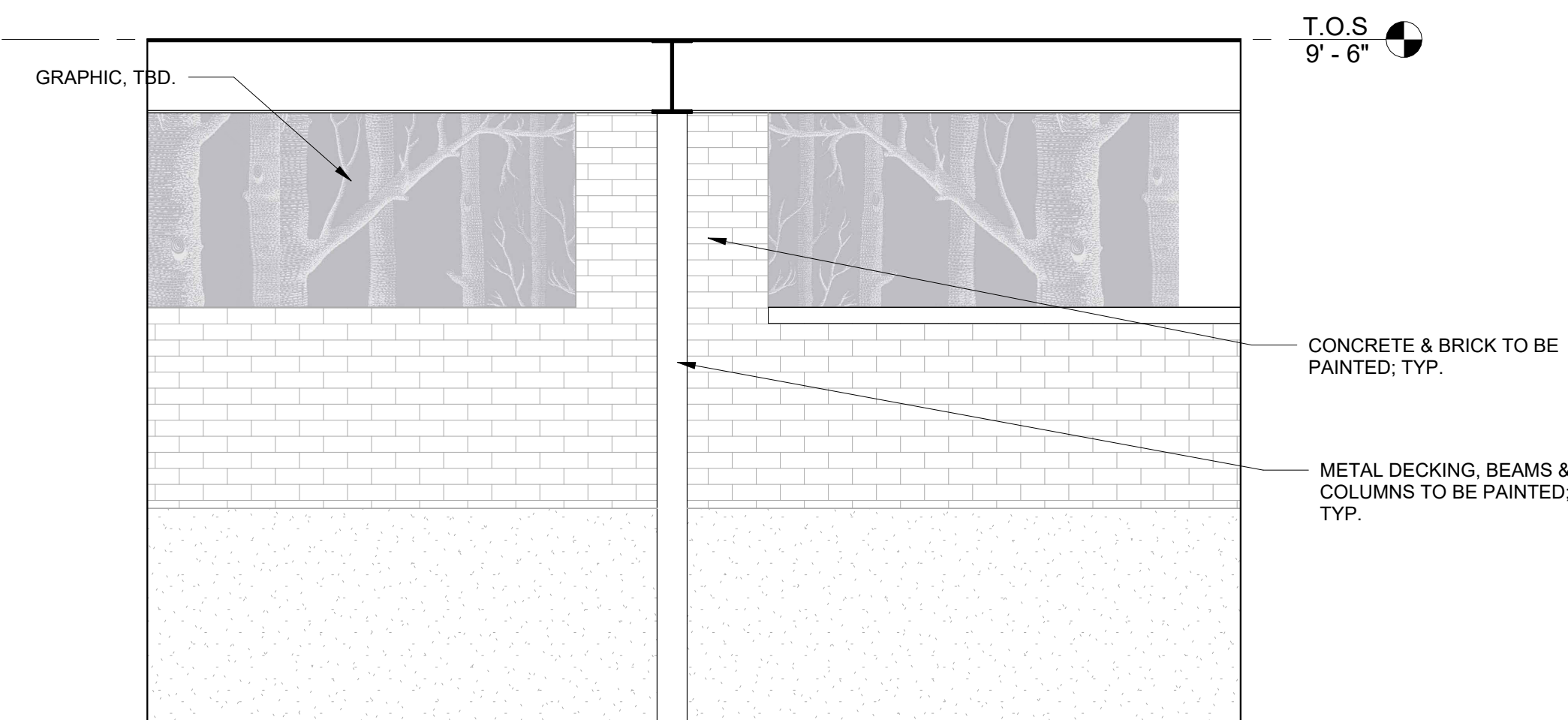
① ELEVATION @ SECURITY
 1/2" = 1'-0"



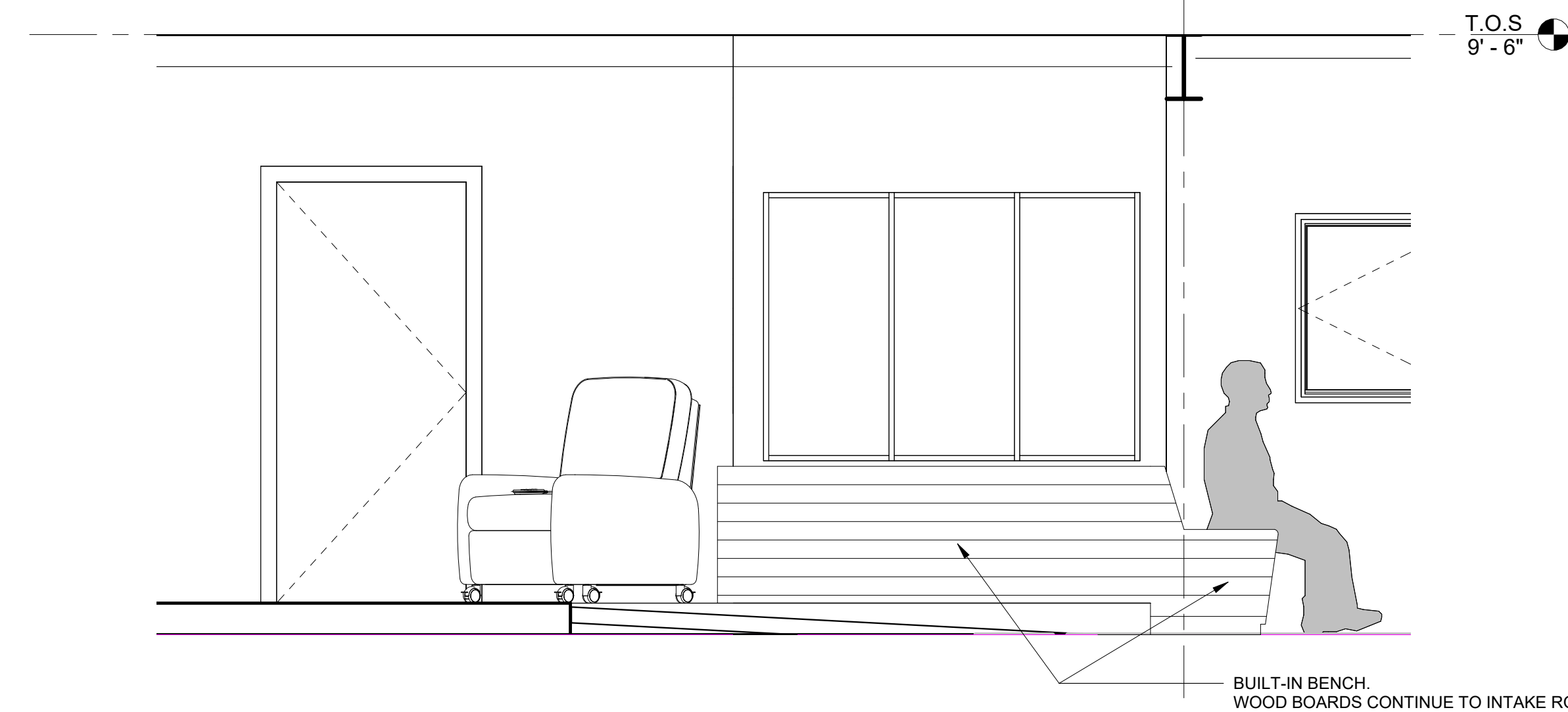
② ELEVATION @ INTAKE
 1/2" = 1'-0"



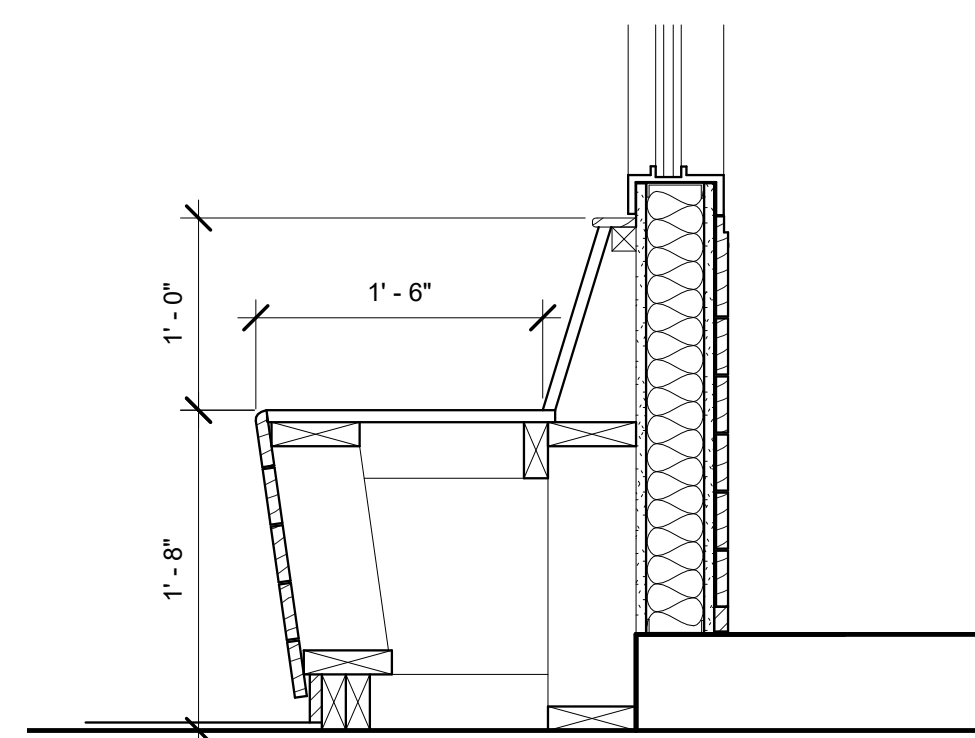
③ ELEVATION @ SCREENING
 1/2" = 1'-0"



④ TYP. INTERIOR WALL ELEVATION
 1/2" = 1'-0"



⑤ ELEVATION @ INTAKE RAMP
 1/2" = 1'-0"



⑥ SECTION @ BUILT-IN BENCH
 1" = 1'-0"



Leonardi Aray Architects
 1035 Cambridge Street, Suite 1
 Cambridge, MA 02141
 p: 617.270.3912
 www.larayarchitects.com

CONSULTANTS



PROJECT

**112 Southampton Entryway
 Interior Renovation**

Project Status: BID DOCUMENTS
 Issue Date: 06/23/2023
 File: LAA/Projects/2113
 Drawn by: LAA
 Checked by: LA

CLIENT

Boston Public Health Commission

STAMP



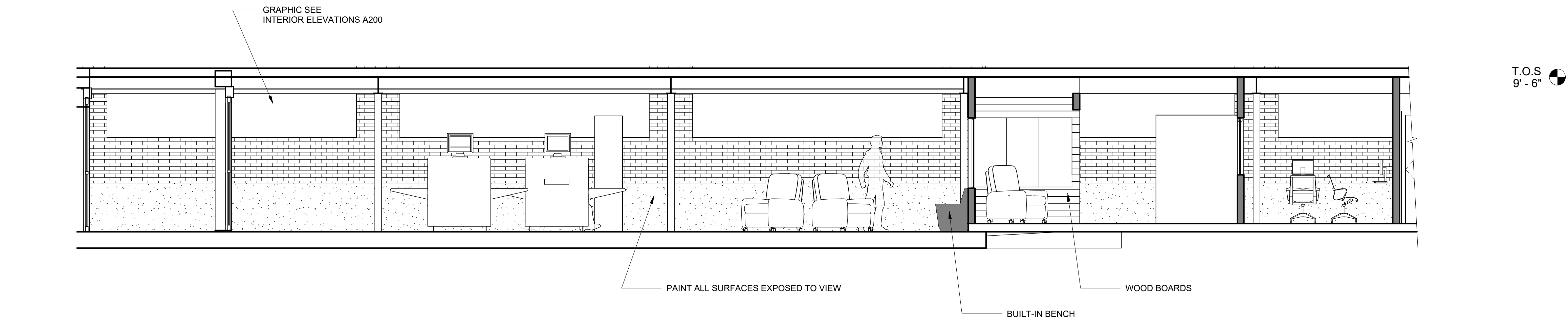
REVISIONS

NO.	Date	Description
-----	------	-------------

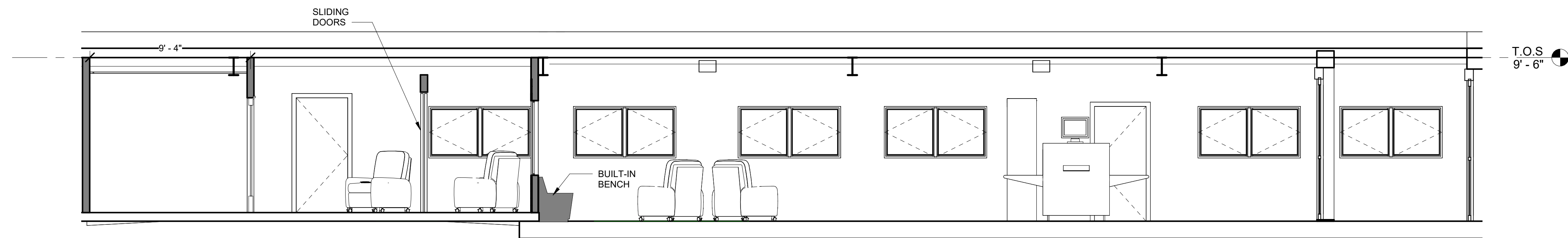
SHEET TITLE

INTERIOR ELEVATIONS

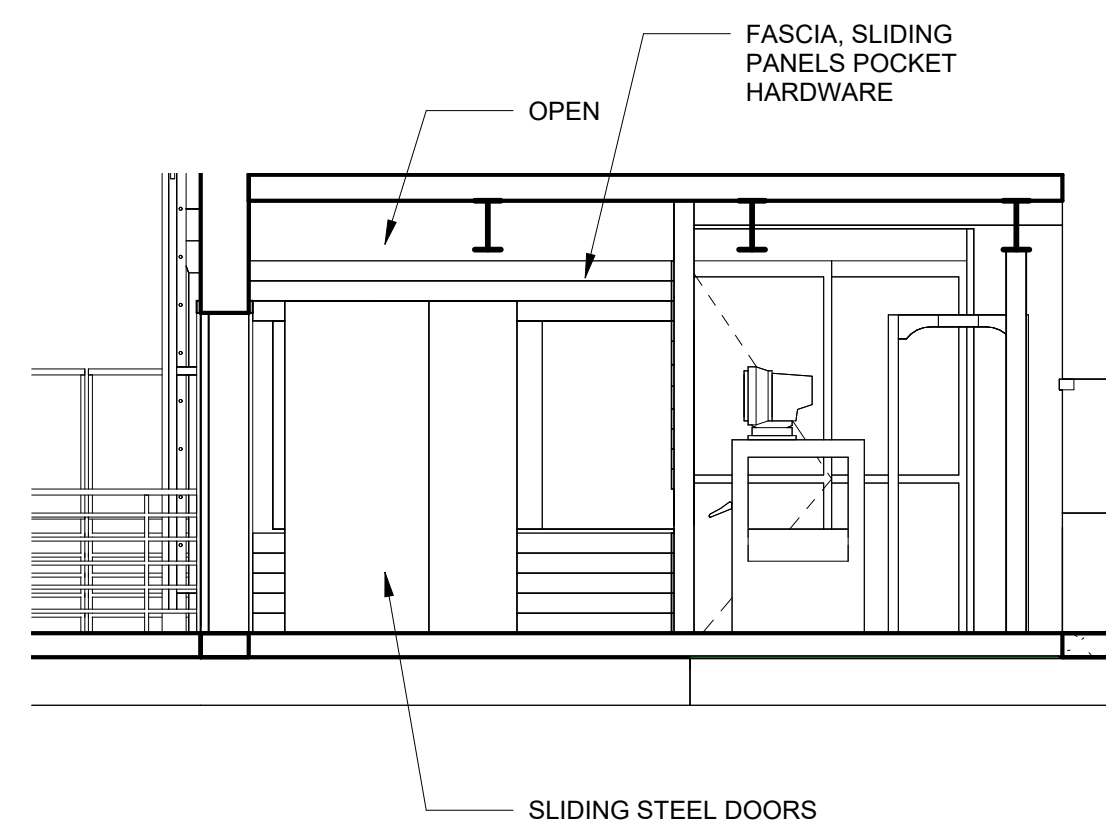
A201



① SECTION @ EXISTING
 1/4" = 1'-0"



② SECTION SOUTH
 1/4" = 1'-0"



③ Section 2
 1/4" = 1'-0"



Leonardi Aray Architects
 1035 Cambridge Street, Suite 1
 Cambridge, MA 02141
 p: 617.270.3912
 www.larayarchitects.com

CONSULTANTS



GDT ENGINEERING
 www.GDTENG.COM
 (562)270 2172
 BRIAN.CHEE@GDTENG.COM

PROJECT

**112 Southampton Entryway
 Interior Renovation**

Project Status: BID DOCUMENTS
 Issue Date: 06/23/2023
 File: LAA/Projects/2113
 Drawn by: LAA
 Checked by: LA

CLIENT

Boston Public Health Commission

STAMP



06/23/12

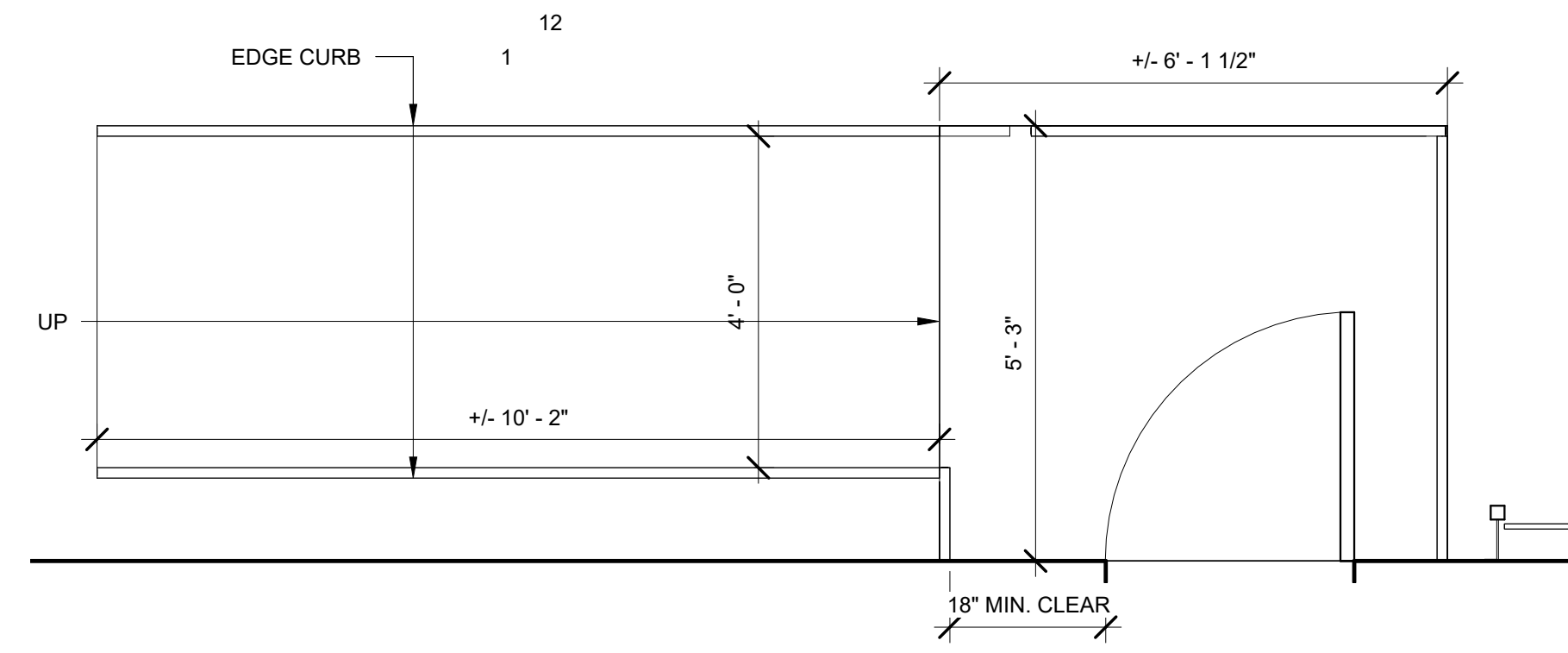
REVISIONS

NO.	Date	Description
-----	------	-------------

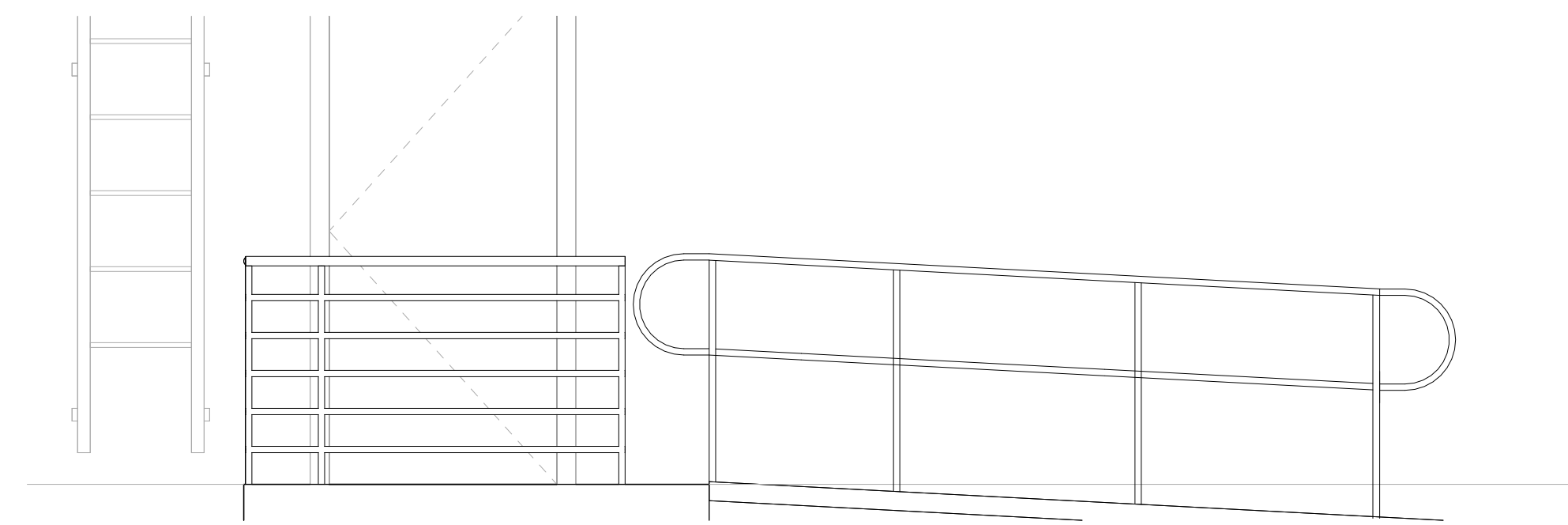
SHEET TITLE

EXTERIOR DETAILS

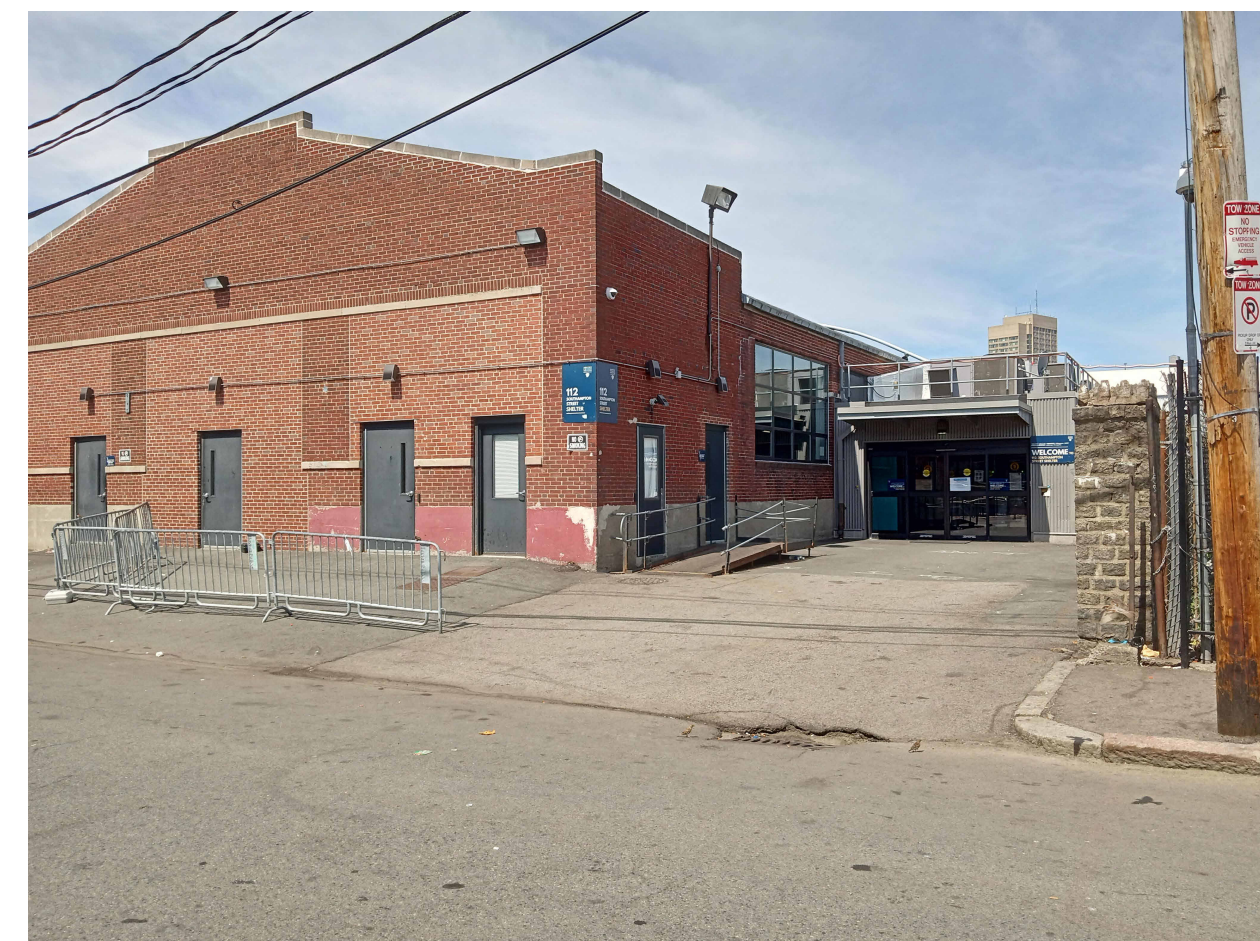
A400



① REAR RAMP, PLAN VIEW
 1/2" = 1'-0"



② REAR RAMP
 1/2" = 1'-0"



④ PHOTO EXISTING WALL @ ENTRANCE
 1/8" = 1'-0"

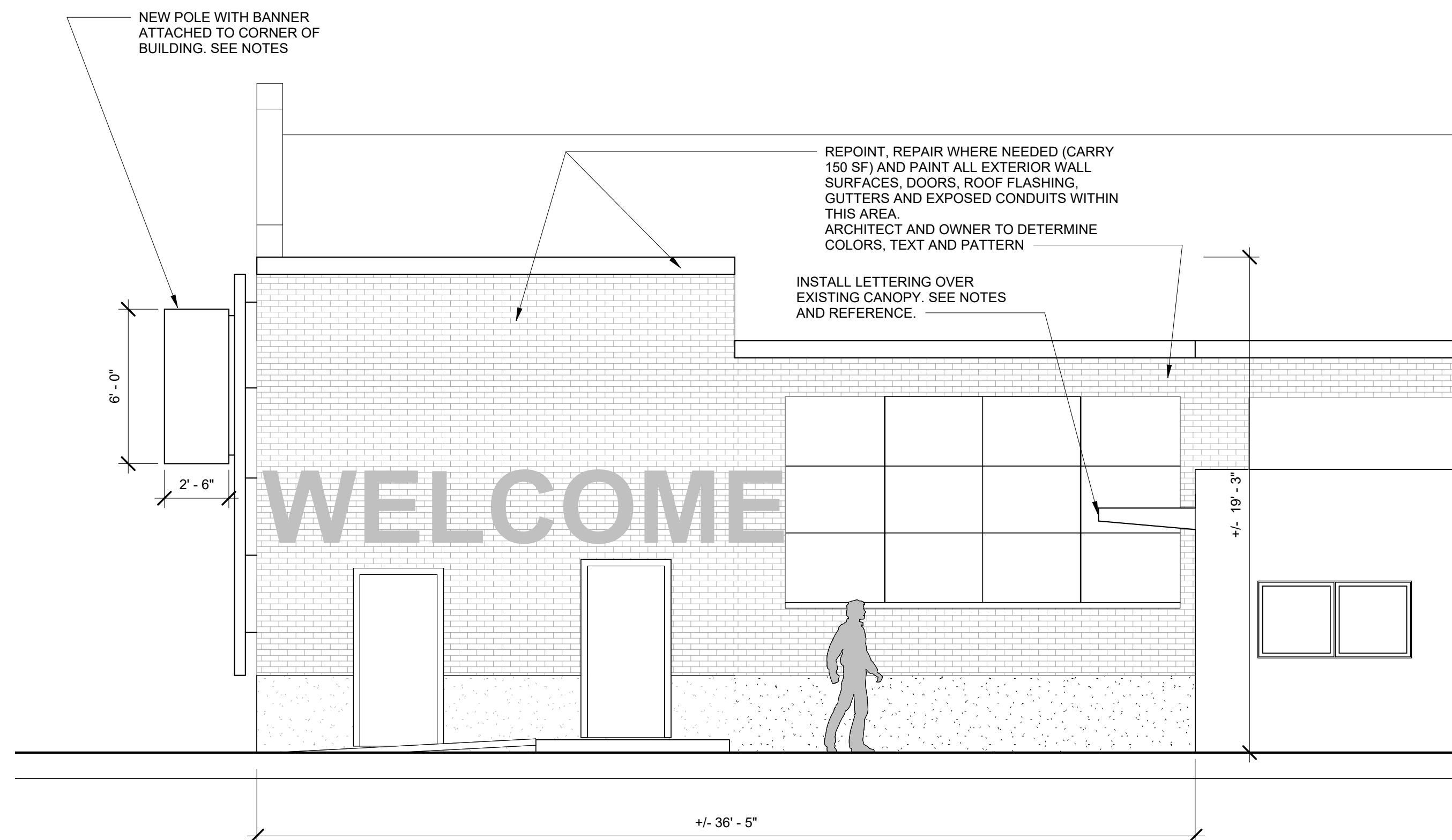
NOTES

VERTICAL WALL MOUNT POLE

- AMERICAN FLAGPOLE, CONCORD INDUSTRIES, OR APPROVED EQUAL
- STAINLESS STEEL WITH NO. 4 FINISH
- INCLUDE LIGHTING PROTECTION
- FACTORY FINISH COLOR BY ARCHITECT
- SUBMIT SHOP DRAWINGS INDICATING MATERIAL CHARACTERISTICS, DETAILS OF CONSTRUCTION, CONNECTIONS, AND RELATIONSHIP WITH ADJACENT CONSTRUCTION

BANNER & CANOPY LETTERING

- FASTSIGNS OF WALTHAM OR APPROVED EQUAL
- CANOPY METAL LETTERING: 1" THICK MIN. +/- 10" HEIGHT (1" LARGER THAN CANOPY FASCIA).
- MATERIALS, ASSEMBLY AND ATTACHMENTS SHALL RESIST SNOW, WIND, SUCTION AND UPLIFT DESIGN LOADS IN ACCORDANCE WITH THE STATE BUILDING CODES, AND ANY LOCAL CODES, AT ANY POINT WITHOUT DAMAGE OR PERMANENT SET
- FRAME CONSTRUCTION: ASSEMBLIES SHALL BE CONSTRUCTED WITH SQUARE STEEL TUBING WITH THE MAIN FRAMING ELEMENTS WELDED. NESTED CONCEALED SLEEVE ASSEMBLIES WITH FLUSH FASTENERS WILL BE ACCEPTABLE FOR OTHER CONNECTIONS, PROVIDING REQUIRED STRENGTH IS MAINTAINED
- FRAME MEMBER SIZING, PLACEMENT, METHOD OF CONSTRUCTION AND ATTACHMENT, SHALL BE BY THE SIGN FABRICATOR
- COORDINATE INSTALLATION OF BANNER WITH POLE INSTALLATION
- 5-YEAR WARRANTY



③ EXTERIOR WALL @ ENTRANCE NEW WORK
 1/4" = 1'-0"



⑤ CANOPY LETTERING FOR REFERENCE
 1/4" = 1'-0"



Leonardi Aray Architects
 1035 Cambridge Street, Suite 1
 Cambridge, MA 02141
 p: 617.270.3912
 www.larayarchitects.com

CONSULTANTS



PROJECT

**112 Southampton Entryway
 Interior Renovation**

Project Status: BID DOCUMENTS
 Issue Date: 06/23/2023
 File: LAA/Projects/2113
 Drawn by: LAA
 Checked by: LA

CLIENT

Boston Public Health Commission

STAMP

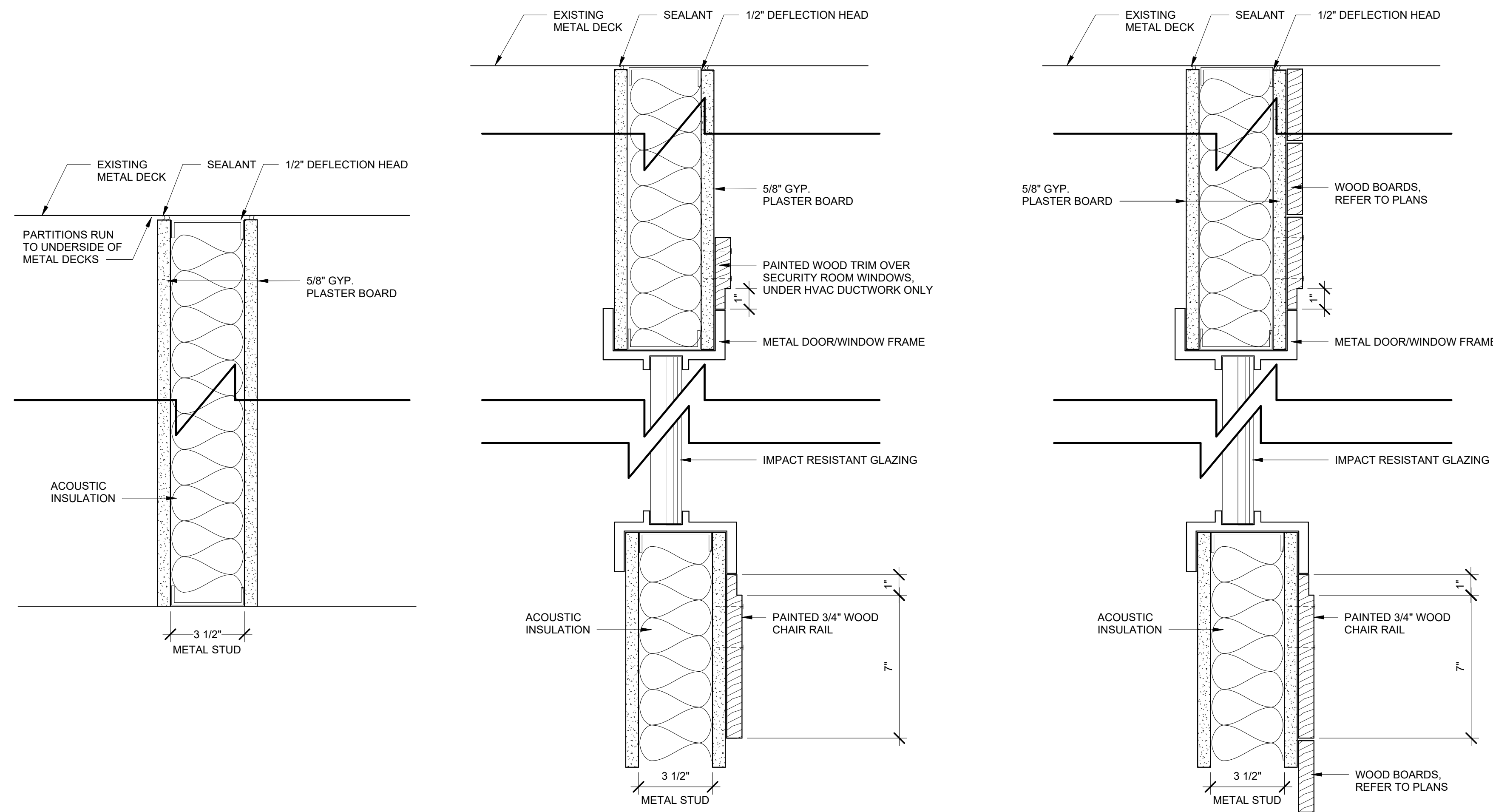


REVISIONS

NO. Date Description

SHEET TITLE

PARTITIONS & FINISH SCHEDULE



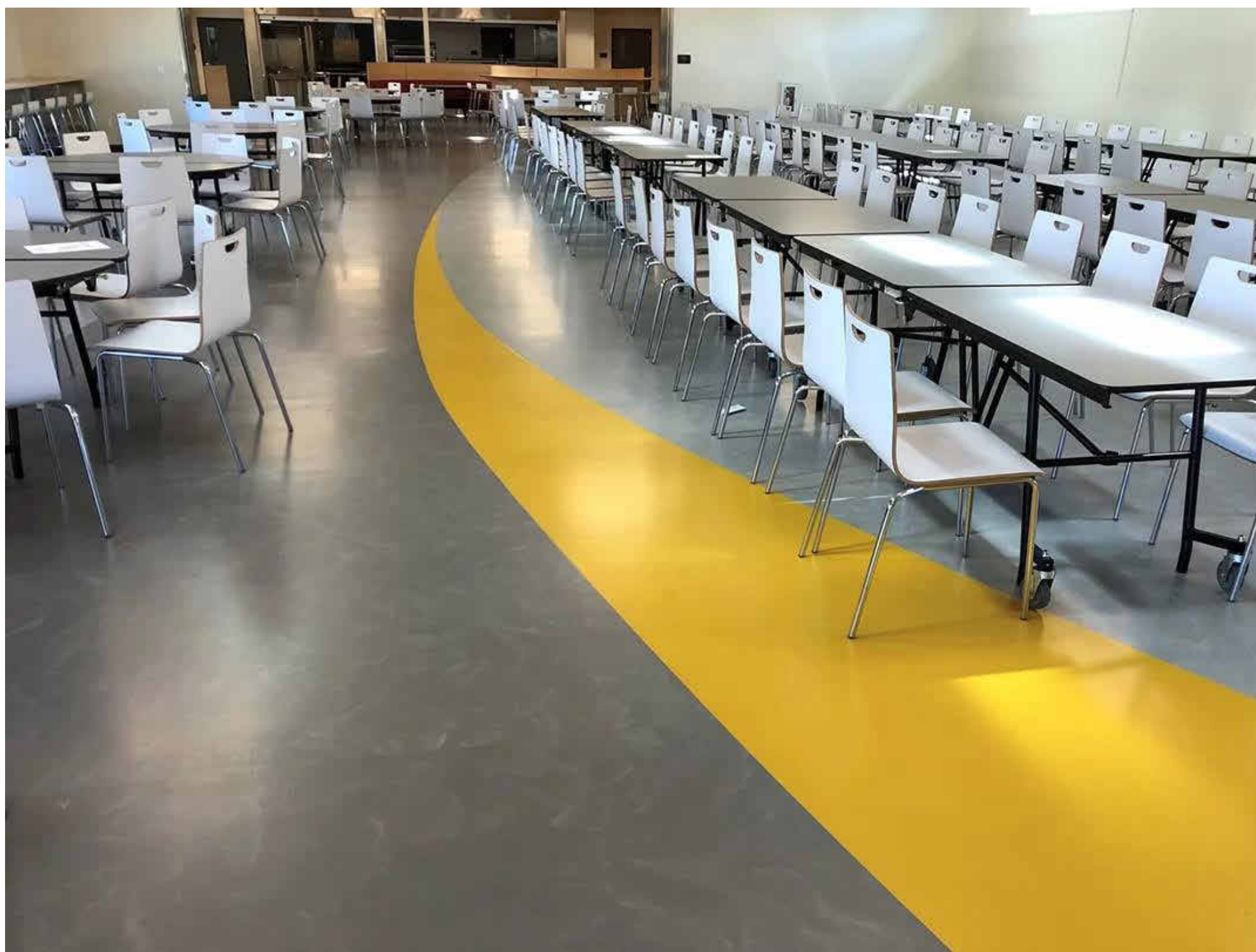
1 PARTITION DETAILS
 3" = 1'-0"

FINISH SCHEDULE						LEGEND
ROOM NAME	ROOM #	FLOORING (1)	BASE	WALL	CEILING (2)	
VESTIBULE	100	RUBBER	B1, B2	W1	C1	B1. VINYL BASE AT ALL GYPSUM WALLS B2. NO BASE AT EXPOSED MASONRY/CONCRETE WALLS W1. PAINT EXISTING EXPOSED MASONRY/CONCRETE WALLS AND GYPSUM WALLS W2. PAINT EXISTING GYPSUM WALLS W3. NEW PARTITIONS: PAINTED PLASTER W4. NEW PARTITIONS: PAINTED PLASTER AND WOOD BOARDS C. PAINT ALL SURFACES. SELECTED ELEMENTS OF DIFFERENT COLORS. TWO COLORS TOTAL. CEILING CLOUDS WHERE SHOWN. C1. PAINT ALL SURFACES ONE COLOR (1) RUBBER FLOORING: SPORTFLEX M, MONDO BY KIEFER USA, 6 MM OR APPROVED EQUAL. REFER TO SHEET A600 FOR SAMPLE DESIGN CONCEPT. (2) CEILING CLOUDS: TECTUM SHAPES BY ARMSTRONG, 2" THICKNESS. COMBINATION OF 48", 36" AND 24". REFER TO RCP. CUSTOM COLORS BY ARCHITECT. SEE SHEET A600 FOR CEILING PAINT REFERENCE.
SCREENING	101	RUBBER	B1, B2	W1	C	
SAFE AND SOUND	102	RUBBER	B1, B2	W1	C	
INTAKE	103	RUBBER	B1	W2, W4	C	
HALLWAY	104	RUBBER	B1, B2	W1, W3	C	
SECURITY	105	RUBBER	B1, B2	W1, W3	C1	
OPEN OFFICE	106	RUBBER	B1	W2, W4	C1	

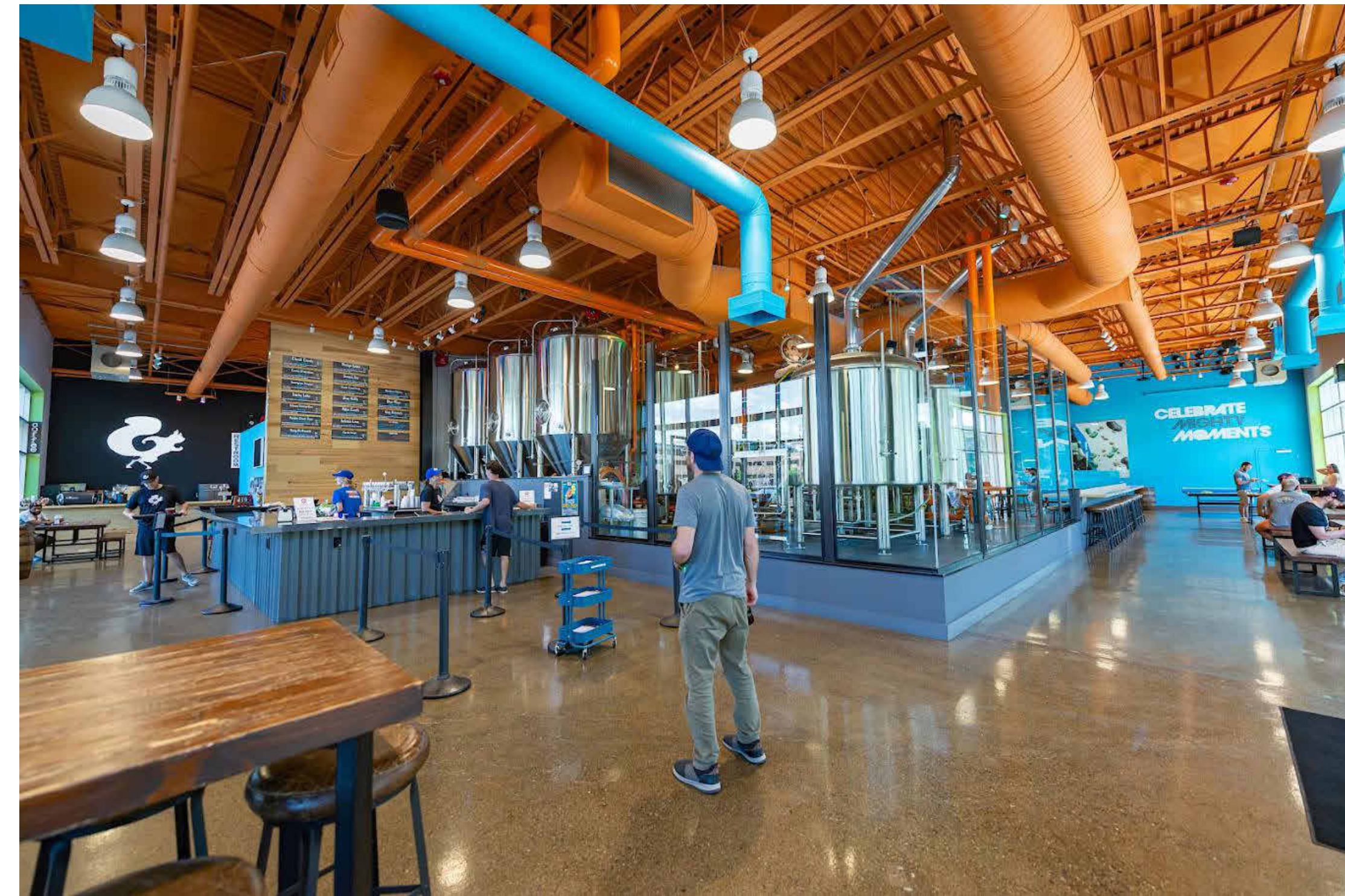
2 FINISH SCHEDULE
 1" = 1'-0"

A300

FLOORING TREATMENT



CEILING PAINT CONCEPT



INTERIOR GRAPHIC



Leonardi Aray Architects
 1035 Cambridge Street, Suite 1
 Cambridge, MA 02141
 p: 617.270.3912
 www.larayarchitects.com

CONSULTANTS



PROJECT

**112 Southampton Entryway
 Interior Renovation**

Project Status: BID DOCUMENTS
 Issue Date: 06/23/2023
 File: LAA/Projects/2113
 Drawn by: LAA
 Checked by: LA

CLIENT

Boston Public Health Commission

STAMP



REVISIONS

NO.	Date	Description
-----	------	-------------

SHEET TITLE

INTERIOR FLOORING/ FURNITURE

A500

ONE-LINE SYMBOLS		ELECTRICAL SYMBOLS	
SYMBOL	DESCRIPTION	SYMBOL	DESCRIPTION
ONE-LINE		LIGHTING FIXTURES	
	GROUND CONNECTION		RECTANGULAR LUMINAIRE A1 = FIXTURE TYPE a = CONTROL SWITCH INDICATOR 1 = CIRCUIT NUMBER
	GENERATOR		EGRESS LIGHTING: 1. FULLY SHADED SYMBOL - 24 HOUR EGRESS FIXTURE 2. HALF-SHADED SYMBOL - SWITCHED EGRESS FIXTURE
	FUSE		EGRESS LIGHTING SHALL BE CONNECTED TO EXISTING ON-SITE GENERATOR FOR 90 MINUTES OF BACKUP POWER.
	CIRCUIT BREAKER		BARE LAMP - INDUSTRIAL / STRIP
	METER		ROUND LUMINAIRE
	CURRENT TRANSFORMER		WALL MOUNTED LUMINAIRE
	LIGHTNING ARRESTOR		EXIT SIGN, CEILING OR WALL MOUNTED
	CAPACITOR		EMERGENCY LIGHTING UNIT
	DISCONNECT SWITCH		POLE MOUNTED (HEADS AS INDICATED)
	GROUND FAULT PROTECTOR	SWITCHES & CONTROL OUTLETS	
	DRAWOUT CIRCUIT BREAKER		SWITCHES - 48" AFF GANG LIGHT SWITCHES INDICATED ADJACENT TO EACH OTHER IN A MULTI-GANG BOX AND MULTI-GANG FACEPLATE UNLESS OTHERWISE NOTED
	MAGNETIC MOTOR STARTER		2 = DOUBLE POLE, SINGLE THROW
	MOTOR		3 = THREE WAY
	CIRCUIT BREAKER PANELBOARD (H-X = 277/480V) (L-X = 208/120V)		4 = FOUR WAY
	TRANSFER SWITCH		K = KEY OPERATED
	TRANSFORMER		C = MOMENTARY CONTACT, SPDT, CENTER OFF
	OVERLOAD RELAY		P = OFF PILOT LIGHT
	N.O. CONTACT		LOW VOLTAGE ADDRESSIBLE SWITCH
	N.C. CONTACT		LIGHT SENSOR / PHOTO CONTROL
	KIRK KEY		OCCUPANCY SENSOR, CEILING MOUNTED
	LAMP		POWER PACK, CEILING MOUNTED
	SOLID-STATE MULTIFUNCTION METER		UL924 RATED EM POWER PACK, CEILING MOUNTED
		CABLE TV & PUBLIC ADDRESS	
			TELEVISION OUTLET 18" AFF UON
			CEILING MOUNTED SPEAKER, UON
			WALL MOUNTED SPEAKER, 7"-6" AFF, UON
			SOUND CONTROL STATION
			VOLUME CONTROL MOUNTED 48" AFF, UON
			INTERCOM STATION MOUNTED 48" AFF, UON
		POWER DISTRIBUTION	
			PANELBOARD
			MOTOR CONTROL CENTER
			DISTRIBUTION POWER PANEL OR SWITCHBOARD
			ELECTRICAL CABINET - CONFIGURATION AS INDICATED
			PULL BOX, SIZED IN ACCORDANCE WITH NEC ARTICLE 314 REQUIREMENTS OR LARGER, UON
			DISCONNECT SWITCH
			MOTOR STARTER WITH NEMA SIZE AS INDICATED
			MOTOR OR EQUIPMENT CONNECTION
			TRANSFORMER
		GROUNDING & LIGHTNING PROTECTION	
			AIR TERMINAL - REFER TO DETAILS
			GROUND ROD
			EXOTHERMIC WELD TYPE GROUNDING CONNECTION
			WALL MOUNTED GROUNDING BUSBAR
		CONDUIT / WIRING	
			CONDUIT UPWARD
			CONDUIT DOWNWARD
			CONDUIT CONCEALED IN CEILING OR WALL
			CONDUIT EXPOSED
			CONDUIT CONCEALED BELOW SLAB
		POWER OUTLETS	
			SINGLE RECEPTACLE, MOUNTED AT 18" AFF, UON SHADED SYMBOL - ON EMERGENCY POWER
			DUPLEX RECEPTACLE, MOUNTED AT 18" AFF, UON SHADED SYMBOL - ON EMERGENCY POWER
			DOUBLE DUPLEX RECEPTACLE, MOUNTED AT 18" AFF, UON SHADED SYMBOL - ON EMERGENCY POWER
			SPECIAL RECEPTACLE - CONFIGURATION AS INDICATED MOUNTED 18" AFF, UON SHADED SYMBOL - ON EMERGENCY POWER
			DUPLEX OR DOUBLE DUPLEX RECEPTACLE, FLUSH, CEILING MOUNTED, UON
			DUPLEX OR DOUBLE DUPLEX RECEPTACLE, FLUSH, FLOOR MOUNTED, UON
			JUNCTION BOX, MOUNTED 18" AFF, UON
			JUNCTION BOX, SURFACE MOUNTED ABOVE CEILING OR EXPOSED IN AREAS WITH EXPOSED CONDUIT, UON
			JUNCTION OR PULL BOX, FLUSH, FLOOR MOUNTED, UON
		TELECOMMUNICATION OUTLETS	
			TELEPHONE DATA OUTLET, 54" AFF
			DATA OUTLET, 18" AFF
			VOICE/DATA OUTLET, 18" AFF
			SAME AS INDICATED ABOVE EXCEPT CIRCULAR SYMBOLS INDICATE CEILING MOUNTED AND SQUARE SYMBOLS INDICATE FLUSH MOUNTED IN FLOOR
			WLAN WIRELESS ADAPTER, CEILING MOUNTED UON
		SUBSCRIPTS ON ELECTRICAL OUTLETS	
		+44" =	NUMBER INDICATES MOUNTING HEIGHT AFF TO CENTER LINE OF DEVICE.
		AC =	ABOVE COUNTER - MOUNT DEVICE 6" ABOVE COUNTER OR 36" AFF AT WORKSTATIONS.
		WP =	WEATHER PROOF - PROVIDE NEMA-3R RATED DEVICE OR ENCLOSURE SUITABLE FOR EXTERIOR USE.
		TV =	TELEVISION DEDICATED - COORDINATE EXACT MOUNTING HEIGHT WITH EQUIPMENT INSTALLATION REQUIREMENTS.
		EP =	EXPLOSION PROOF PER NEC 500 CLASS I, DIVISION 1.
		EX =	EXISTING DEVICE OR EQUIPMENT.
		EM =	CONNECTED TO AN EMERGENCY POWER SOURCE.
		D =	DEDICATED - PROVIDE ENGRAVED COVER PLATE.
		H =	HOSPITAL GRADE.
		T =	TAMPER RESISTANT.
		U =	CONNECTED TO UPS SYSTEM.
		IG =	ISOLATED GROUND.
		GFI =	OUTLET WITH GFCI PROTECTION.
		PNL 1,3,5	PANELBOARD AND CIRCUIT AS INDICATED. CONTRACTOR SHALL PROVIDE CONDUIT AND WIRES PER 2016 CEC TO CONNECT THE CIRCUIT(S) AS INDICATED ON THE PLAN.

BRANCH CIRCUIT HOMERUN CONDUCTOR SIZING SCHEDULE

120V, 20A BRANCH CIRCUITS		277V, 20A BRANCH CIRCUITS	
HOMERUN LENGTH	MINIMUM CONDUCTOR SIZE	HOMERUN LENGTH	MINIMUM CONDUCTOR SIZE
LESS THAN 100 FEET	#12 AWG COPPER	LESS THAN 250 FEET	#12 AWG COPPER
100 TO 150 FEET	#10 AWG COPPER	250 TO 350 FEET	#10 AWG COPPER
150 TO 250 FEET	#8 AWG COPPER	GREATER THAN 350 FEET	#8 AWG COPPER
GREATER THAN 250 FEET	#6 AWG COPPER		

NOTE: PROVIDE CONDUCTOR SIZES INDICATED ON ABOVE SCHEDULE UNLESS OTHERWISE NOTED INDICATED ON LIGHTING POWER AND SYSTEMS DRAWINGS HOMERUN JUNCTION BOX TO BE WITHIN 10' OF LAST DEVICE CONNECTED TO CIRCUIT. HOMERUN LENGTH TO INCLUDE BOTH HORIZONTAL AND VERTICAL ROUTING DISTANCES. INCREASE CONDUIT SIZE TO MEET THE NEC FOR INCREASE CONDUCTOR SIZES

ELECTRICAL SHEET LIST	
Sheet Number	Sheet Name
E001	GENERAL SHEET
E100	FIRST FLOOR - DEMOLITION PLAN
E101	FIRST FLOOR - POWER AND LIGHTING PLAN
E600	SPECIFICATION
Grand total: 4	



Leonardi Aray Architects
1035 Cambridge Street, Suite 1
Cambridge, MA 02141
p: 617.270.3912
www.larayarchitects.com

CONSULTANTS



GDT ENGINEERING
www.GDTENG.COM
t: (662) 270 2172
brian.chee@gdteng.com

PROJECT

**112 Southampton
Entryway Redesign**

Project Status: 100% CD
Issue Date: 05/26/2023
GDT Project Number: 23083
Drawn by: B.CHEE
Checked by: B.CHEE

CLIENT

Boston Public Health Commission

STAMP

REVISIONS

NO.	Date	Description

SHEET TITLE

GENERAL SHEET

E001



Leonardi Aray Architects
 1035 Cambridge Street, Suite 1
 Cambridge, MA 02141
 p: 617.270.3912
 www.larayarchitects.com

CONSULTANTS



GDT ENGINEERING
 www.GDTENG.com
 t: (617) 270 2172
 brian.chee@gdteng.com

DEMOLITION GENERAL NOTES:

1. THE CONTRACTOR SHALL VISIT THE SITE AND BECOME FAMILIAR WITH THE EXISTING CONDITIONS. MAKE MODIFICATIONS TO EXISTING ELECTRICAL EQUIPMENT AS NECESSARY OR REQUIRED BY THESE ALTERATIONS AND ADDITIONS. THE DRAWINGS DO NOT INDICATE ALL SUCH ELECTRICAL EQUIPMENT.
2. DISCONNECT AND REMOVE EXISTING ELECTRICAL MATERIALS AND EQUIPMENT WHICH ARE RENDERED OBSOLETE BY THESE ALTERATIONS AND ADDITIONS.
3. DISCONNECT, REMOVE AND RELOCATE EXISTING ELECTRICAL EQUIPMENT WHICH INTERFERE WITH OBSTRUCT OR ARE OBSTRUCTED BY THESE ALTERATIONS OR ADDITIONS.
4. ITEMS TO REMAIN SHALL MAINTAIN FUNCTION. EXTEND UTILITIES AS NECESSARY TO CONTINUE OPERATION.
5. MAINTAIN UNINTERRUPTED SERVICES TO ALL AREAS REQUIRED BY OWNER DURING THESE ALTERATION AND ADDITIONS.
6. EXISTING MATERIAL AND EQUIPMENT REMOVED UNDER THIS CONTRACT SHALL REMAIN THE PROPERTY OF THE OWNER AND UNLESS REFUSED SHALL BE STORED OR DISPOSED OF AS DIRECTED. EQUIPMENT DAMAGED DURING REMOVAL UNDER THIS CONTRACT SHALL BE REPAIRED OR REPLACED.
7. EXISTING MATERIAL AND EQUIPMENT BEING REFUSED BY OWNER SHALL BE DISPOSED OF IN A PROPER MANNER. SEE SPECIFICATIONS FOR REQUIREMENTS.

KEYNOTES:

- 1 DISCONNECT AND REMOVE (E) ELECTRICAL DEVICES IN THIS AREA INCLUDING BUT NOT LIMITED TO RECEPTACLES, LIGHT FIXTURES, FIRE ALARM, SMOKE DETECTOR AND ETC THAT ARE MOUNTED TO DEMOLISHED WALL AND DEMOLISHED CEILING. DEVICES ARE NOT SHOWN ON PLANS. CONTRACTOR SHALL FIELD VERIFY SITE CONDITION PRIOR TO BEGIN OF WORK.
- 2 DISCONNECT AND REMOVE LIGHT FIXTURES. PROTECT AND REUSE (E) LIGHTING CIRCUIT FOR NEW LIGHT FIXTURE.
- 3 EXISTING TO REMAIN AND PROVIDE EXTENSION CORD TO EXTENT POWER TO X-RAY AND SCREEN LOCATION.
- 4 EXISTING TO REMAIN AND PROTECTED.

PROJECT

**112 Southamton
Entryway Redesign**

Project Status: 100% CD
 Issue Date: 05/26/2023
 GDT Project Number: 23083
 Drawn by: B.CHEE
 Checked by: B.CHEE

CLIENT

Boston Public Health Commission

STAMP

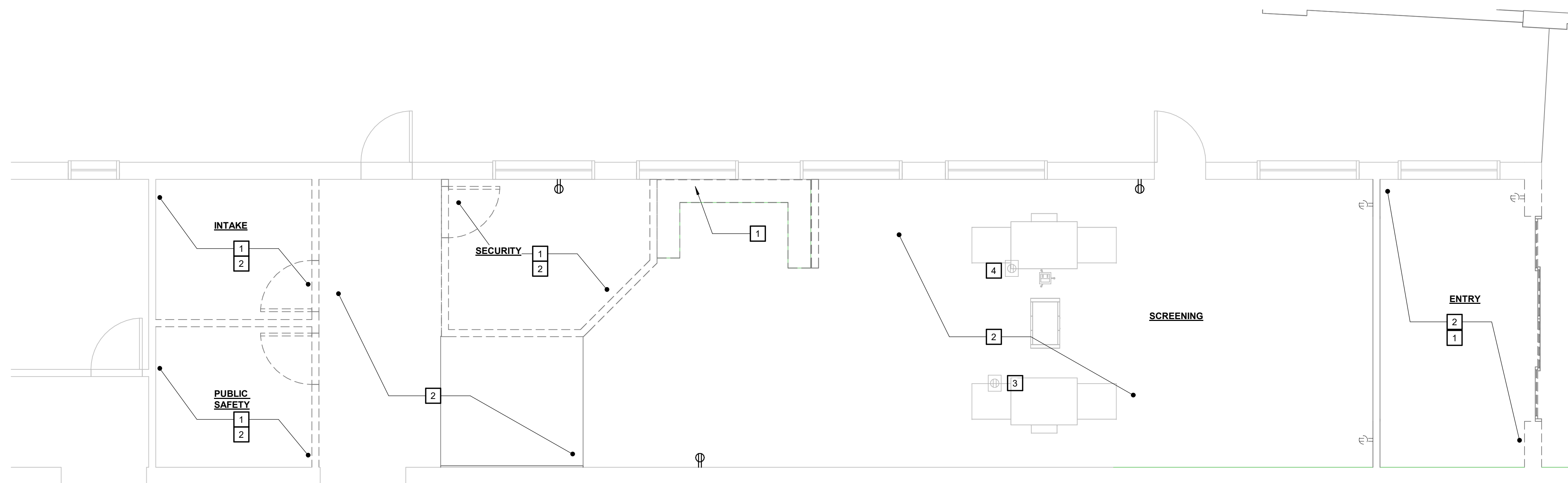
REVISIONS

NO.	Date	Description

SHEET TITLE

FIRST FLOOR - DEMOLITION
PLAN

E100



1 | FIRST FLOOR PLAN - DEMOLITION
 E100 | SCALE: 1/4" = 1'-0"

LIGHTING FIXTURE SCHEDULE

TYPE	DESCRIPTION	MOUNTING	LUMENS	COLOR TEMP	CRI	VOLTAGE	INPUT LOAD	MANUFACTURER	CATALOG NUMBER	NOTES
D1	4" RECESSED DOWN LIGHT W/ MATTE DIFFUSE AND VERY WIDE DISTRIBUTION	RECESSED	900 LM	3500K		MVOLT	10 W	MAXLUME	HH4-LED SERIES	
P1	6" X 4" LINEAR FIXTURE W/ SLIGHT UPLIGHT WIDE CURVE LENS W/ MOTION & DAYLITE COMBO SENSOR	AIR CRAFT CABLE @ 8' AFF	UP - 500 LM/FT & DOWN - 600 LM/FT	3500K		MVOLT	40 W	LITECONTROL	SNAP FLAIR SERIES	
P1E	6" X 4" LINEAR FIXTURE W/ SLIGHT UPLIGHT WIDE CURVE LENS W/ MOTION & DAYLITE COMBO SENSOR + 90 MINS EM BATTERY	AIR CRAFT CABLE @ 8' AFF	UP - 500 LM/FT & DOWN - 600 LM/FT	3500K		MVOLT	40 W	LITECONTROL	SNAP FLAIR SERIES	
P2	6" X 4" LINEAR FIXTURE W/ SLIGHT UPLIGHT WIDE CURVE LENS W/ MOTION & DAYLITE COMBO SENSOR	AIR CRAFT CABLE @ 8' AFF	UP - 500 LM/FT & DOWN - 600 LM/FT	3500K		MVOLT	80 W	LITECONTROL	SAE 101 SERIES	
P2E	6" X 4" LINEAR FIXTURE W/ SLIGHT UPLIGHT WIDE CURVE LENS W/ MOTION & DAYLITE COMBO SENSOR + 90 MINS EM BATTERY	AIR CRAFT CABLE @ 8' AFF	UP - 500 LM/FT & DOWN - 600 LM/FT	3500K		MVOLT	80 W	LITECONTROL	SAE 101 SERIES	
X1	EDGE LITE EXIT SIGN, PROVIDE NUMBER OF FACES AND CHEVRONS AS SHOWN ON PLANS.	CEILING	RED LETTER	-		MVOLT	5 W		LQM-S-W-3-R-120/277-ELN-SD LRP SERIES	

GENERAL NOTES

- CONTRACTOR SHALL FIELD VERIFY ALL EXISTING CIRCUIT AND WIRING PRIOR TO DEMOLITION AND INSTALLATION. COORDINATE WITH ENGINEER AND OWNER FOR ANY CONFLICT FOUND PRIOR TO INSTALLATION.
- DO NOT ROUTE BRANCH CIRCUITS OR FEEDERS IN OR BELOW CONCRETE FLOORS (JON) UNLESS OTHERWISE NOTED.
- PROVIDE FIRE SEALS FOR INSERTS, SLEEVES, AND CONDUIT THROUGH FIRE WALLS, CEILINGS, AND FLOORS PER SPECIFICATION AND DETAIL 1/E604.
- PROVIDE SEPARATE GROUNDED NEUTRAL CONDUCTOR FOR EACH CIRCUIT. MULTI WIRED CIRCUITS WITH SHARED GROUNDED NEUTRAL CONDUCTORS ARE NOT ALLOWED.
- PROVIDE RIGID STEEL CONDUIT OF ALL EXPOSED EXTERIOR FEEDERS AND BRANCH CIRCUITS.
- NO PIPING, DUCTS, LEAK PROTECTION APPARATUS, OR OTHER EQUIPMENT FOREIGN TO THE ELECTRICAL INSTALLATION SHALL BE LOCATED IN THE DEDICATED ELECTRICAL SPACE. REPORT ANY CONFLICT TO THE GENERAL CONTRACTOR AND ARCHITECT.
- PROVIDE EMERGENCY CIRCUITS IN SEPARATE CONDUITS; DO NOT COMBINE WITH NORMAL OR STANDBY WIRING.
- CONCEAL ALL WIRING IN WALLS AND, COLUMNS, AND CEILING SPACE IN FINISHED SPACES.
- PROVIDE RIGID STEEL CONDUITS FROM FLOOR TO 12'-0" ABOVE FINISHED FLOOR IN EXPOSED AREAS. ELECTRICAL METALIC TUBING ALLOWED ABOVE 12'-0" FINISHED FLOOR.
- PROVIDE CAST METAL DEVICE BOXES MINIMUM 2" DEEP FOR TERMINATION OF RIGID STEEL CONDUITS BELOW 12'-0" OF FINISHED FLOOR.
- PROVIDE CONDUIT SEALS AT WALL PENETRATIONS THROUGH WALLS, CEILINGS, AND FLOORS BETWEEN SPACES OF DIFFERENT TEMPERATURES AND OR HUMIDITY LEVELS.
- ROUTE ALL HORIZONTAL CONDUITS STRAIGHT WITH BUILDING STRUCTURAL MEMBERS ABOVE BOTTOM CORD OF JOIST.
- PROVIDE LABELS WITH PANEL AND CIRCUIT NUMBERS ON ALL DEVICE COVERS. WRITE PANEL AND CIRCUIT NUMBER ON INSIDE OF DEVICE PLATE BOX COVERS WITH PERMANENT MARKER.
- WRITE PANEL AND CIRCUIT OF ALL CIRCUITS RUNNING THROUGH J-BOX ON OUTSIDE COVERS WITH PERMANENT MARKER.
- PROVIDE CONDUIT AND WIRING TO EXTEND EXISTING CIRCUITS TO NEW LIGHT FIXTURE WITH MODIFY LIGHTING CONTROL.
- NEW RECEPTACLES AND EQUIPMENT IN REMODEL SPACE SHALL BE CONNECTING TO EXISTING PANELBOARD P12.



Leonardi Aray Architects
 1035 Cambridge Street, Suite 1
 Cambridge, MA 02141
 p: 617.270.3912
 www.larayarchitects.com

CONSULTANTS



GDT ENGINEERING
 www.GDTENG.com
 t: (617) 270 2172
 brian.chee@gdteng.com

PROJECT

112 Southamption Entryway Redesign

Project Status: 100% CD
 Issue Date: 05/26/2023
 GDT Project Number: 23083
 Drawn by: B.CHEE
 Checked by: B.CHEE

CLIENT

Boston Public Health Commission

STAMP

KEYNOTES:

- PROVIDE POWER AND DATA FLOORBOX FOR X-RAY AND METAL DETECTOR. COORDINATE FINAL LOCATION WITH X-RAY AND METAL DETECTOR INSTALLER PRIOR TO INSTALLATION.
- EXTEND AND RECONNECT TO EXISTING FA VISUAL AND NOTIFICATION CIRCUIT.

REVISIONS

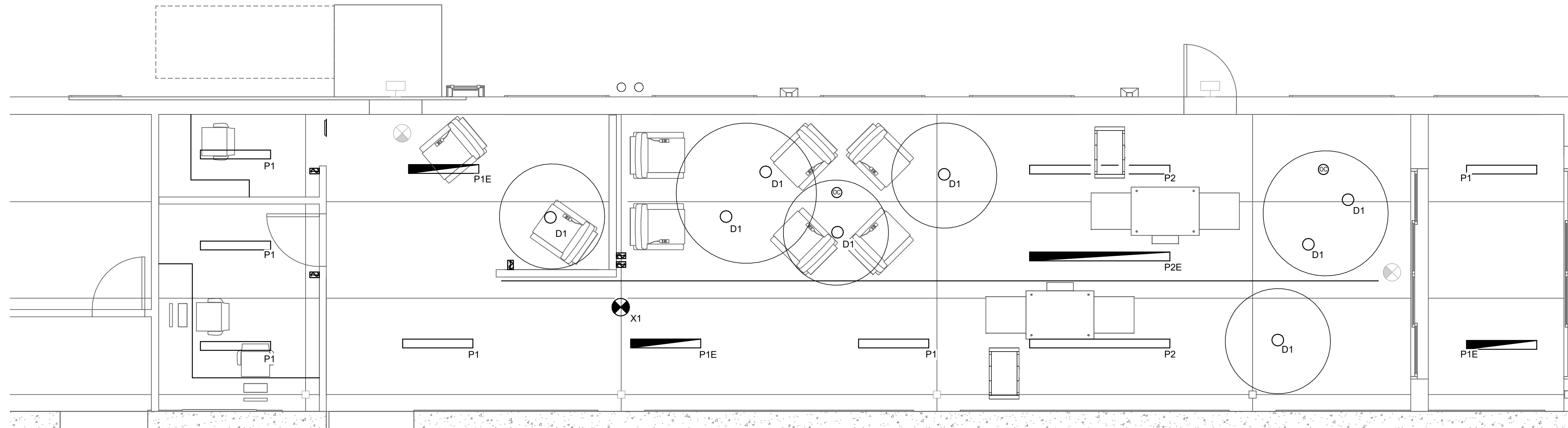
NO.	Date	Description

SHEET TITLE

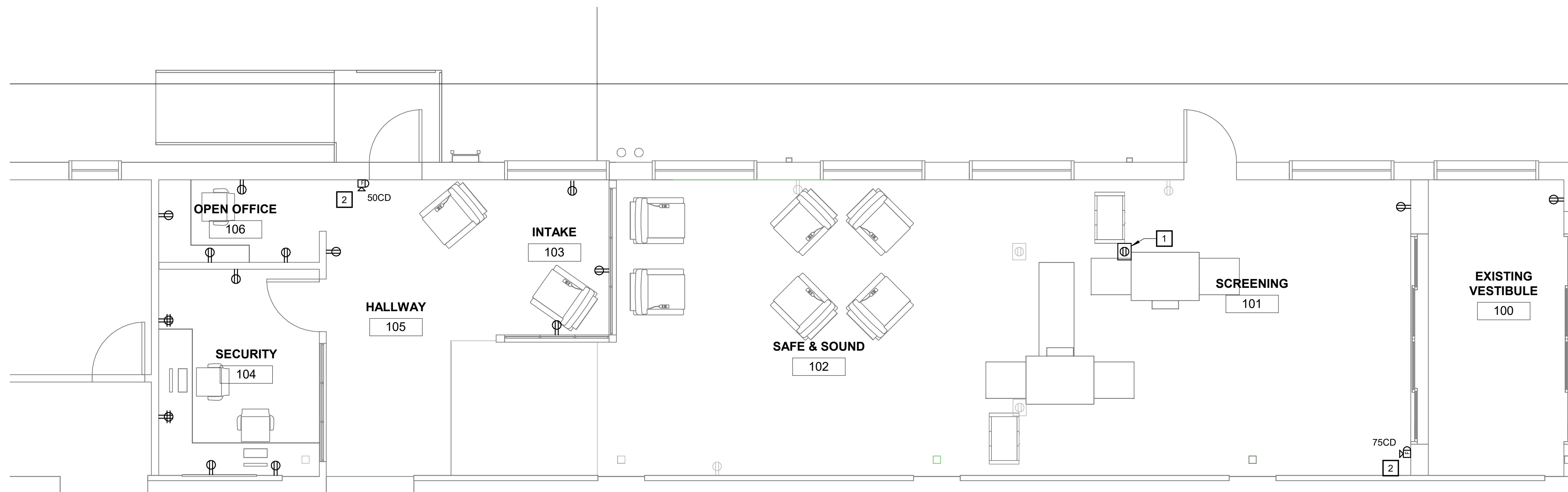
FIRST FLOOR - POWER AND
LIGHTING PLAN

E101

2 | FIRST FLOOR LIGHTING PLAN
 E101 | SCALE: 1/4" = 1'-0"



1 | FIRST FLOOR POWER PLAN
 E101 | SCALE: 1/4" = 1'-0"





Leonardi Aray Architects
 1035 Cambridge Street, Suite 1
 Cambridge, MA 02141
 p: 617.270.3912
 www.larayarchitects.com

CONSULTANTS



GDT ENGINEERING
 www.GDTENG.COM
 t. (62)270 2172
 brian.ch@GDTENG.COM

PROJECT

**112 Southampton
 Entryway Redesign**

Project Status:100% CD
 Issue Date:05/26/2023
 GDT Project Number:23083
 Drawn by:Author
 Checked by:Checker

CLIENT

Boston Public Health Commission

STAMP

REVISIONS

NO.	Date	Description
-----	------	-------------

SHEET TITLE

SPECIFICATION

E600

GENERAL ELECTRICAL REQUIREMENTS

GENERAL - DESCRIPTION
 THIS SECTION INCLUDES MATERIALS, INSTALLATION, AND TESTING OF THE ELECTRICAL SYSTEM.

SUBMITTALS

- SUBMIT SHOP DRAWINGS IN ACCORDANCE WITH ARCHITECT/OWNER REQUIREMENT
- IN SUBMITTED CATALOG CUTS, CROSS OUT ITEMS SHOWN THAT ARE NOT PERTINENT TO THIS PROJECT. WHERE CATALOG CUTS LIST MANUFACTURER'S STANDARD OPTIONS, CROSS OUT THOSE OPTIONS NOT INTENDED TO BE PROVIDED AND CLEARLY HIGHLIGHT THOSE OPTIONS THAT ARE TO BE PROVIDED.
- SUBMIT ELECTRICAL SERVICE CHANGES WORK PROCEDURE.

REGULATORY AGENCIES AND STANDARDS

- ELECTRICAL WORK SHALL COMPLY WITH THE LATEST NEC CODE AND ENERGY CODE PER LOCAL AUTHORITY HAVING JURISDICTION.

QUALITY CONTROL

- MATERIALS, APPLIANCES, EQUIPMENT, AND DEVICES SHALL CONFORM TO THE APPLICABLE UL STANDARDS. THE LABEL OF, OR LISTING BY, UL IS REQUIRED FOR ALL ELECTRICAL EQUIPMENT.

LOCATIONS

- GENERAL: USE EQUIPMENT, MATERIALS, AND WIRING METHODS SUITABLE FOR THE TYPES OF LOCATIONS IN WHICH THEY ARE LOCATED AS DEFINED BELOW.

DEFINITIONS OF TYPES OF LOCATIONS:

- DRY LOCATIONS: INDOOR AREAS WHICH DO NOT FALL WITHIN THE DEFINITIONS BELOW FOR WET, DAMP, HAZARDOUS, OR CORROSIVE LOCATIONS AND WHICH ARE NOT OTHERWISE DESIGNATED IN THE DRAWINGS.
- WET LOCATIONS: LOCATIONS EXPOSED TO THE WEATHER, WHETHER UNDER A ROOF OR NOT, UNLESS OTHERWISE DESIGNATED IN THE DRAWINGS.
- DAMP LOCATIONS: SPACES WHOLLY OR PARTIALLY UNDERGROUND UNLESS OTHERWISE DESIGNATED IN THE DRAWINGS.

MATERIALS - GENERAL

- SIMILAR MATERIALS AND EQUIPMENT SHALL BE THE PRODUCT OF A SINGLE MANUFACTURER.
- PROVIDE ONLY PRODUCTS WHICH ARE NEW, UNDAMAGED, AND IN THE ORIGINAL CARTONS OR CONTAINERS.
- MATERIALS AND EQUIPMENT SHALL BE THE STANDARD PRODUCTS OF MANUFACTURERS REGULARLY ENGAGED IN THE PRODUCTION OF SUCH MATERIAL AND SHALL BE THE MANUFACTURER'S CURRENT DESIGN.
- MATERIALS AND EQUIPMENT SHALL BE SUITABLE FOR STORAGE, INSTALLATION, AND OPERATION AT AN AMBIENT TEMPERATURE OF 0°C TO 40°C EXCEPT WHERE MORE STRINGENT CONDITIONS ARE STATED IN INDIVIDUAL EQUIPMENT SPECIFICATIONS.
- ELECTRICAL EQUIPMENT AND PANELS SHALL BE FACTORY FINISHED WITH MANUFACTURER'S STANDARD PRIMER AND ENAMEL TOPCOATS, UNLESS STATED OTHERWISE IN THE INDIVIDUAL EQUIPMENT SPECIFICATIONS. PROVIDE 1 PINT OF THE EQUIPMENT MANUFACTURER'S TOUCHUP PAINT PER 500 SQUARE FEET OF PAINTED SURFACE FOR REPAIR OF DAMAGED ENAMEL TOPCOATS.

EXECUTION - INSTALLATION

- UNLESS OTHERWISE NOTED, REMOVE EXISTING ELECTRICAL MATERIALS AND EQUIPMENT FROM AREAS INDICATED FOR DEMOLITION OR WHERE EQUIPMENT IS RELOCATED. REMOVE MATERIALS NO LONGER USED, SUCH AS STUDS, STRAPS, AND CONDUITS. REMOVE OR CUT OFF CONCEALED OR EMBEDDED CONDUIT, BOXES, OR OTHER MATERIALS AND EQUIPMENT TO A POINT AT LEAST 3/4 INCH BELOW THE FINAL FINISHED SURFACE. REMOVE EXISTING UNUSED WIRES.
- REPAIR AFFECTED SURFACES TO CONFORM TO THE TYPE, QUALITY, AND FINISH OF THE SURROUNDING SURFACE.

REMOVAL OR RELOCATION OF MATERIALS AND EQUIPMENT

- UNLESS OTHERWISE NOTED, REMOVE EXISTING ELECTRICAL MATERIALS AND EQUIPMENT FROM AREAS INDICATED FOR DEMOLITION OR WHERE EQUIPMENT IS RELOCATED. REMOVE MATERIALS NO LONGER USED, SUCH AS STUDS, STRAPS, AND CONDUITS. REMOVE OR CUT OFF CONCEALED OR EMBEDDED CONDUIT, BOXES, OR OTHER MATERIALS AND EQUIPMENT TO A POINT AT LEAST 3/4 INCH BELOW THE FINAL FINISHED SURFACE. REMOVE EXISTING UNUSED WIRES.
- REPAIR AFFECTED SURFACES TO CONFORM TO THE TYPE, QUALITY, AND FINISH OF THE SURROUNDING SURFACE.

NAMEPLATES

- MARK EACH INDIVIDUAL PANELBOARD, MOTOR CONTROLLER, DISCONNECT SWITCH, TIMER, RELAY, AND CONTACTOR TO IDENTIFY EACH ITEM WITH ITS RESPECTIVE SERVICE OR FUNCTION.
- PROVIDE RED NAMEPLATES DESIGNATED "EMERGENCY" ON ALL THE FOLLOWING ITEMS SERVED BY THE EMERGENCY POWER SYSTEM:
 - MOTOR VFD
 - DISCONNECT SWITCHES
 - REFRIGERANT DETECTION SYSTEM
 - BMS
- PROVIDE THE FOLLOWING LISTED OUTLETS AND EQUIPMENT WITH ENGRAVED LABEL LISTING THE PANEL DESIGNATION AND CIRCUIT NUMBER:
 - PROVIDE A NAMEPLATE INSIDE THE DOOR OF EACH PANELBOARD LISTING ITS DESIGNATION, VOLTAGE, AND FEEDER CIRCUIT NUMBER.
 - PROVIDE NAMEPLATES WITH ENGRAVED LETTERING NOT LESS THAN 1/4 INCH HIGH. USE BLACK-ON-WHITE LAMINATED PLASTIC, ATTACHED WITH RIVETS OR SHEET METAL SCREWS. DO NOT USE EMBOSSED PLASTIC ADHESIVE TAPE.

WARNING SIGNS

- INSTALL MARKINGS, IDENTIFICATIONS, WARNING, CAUTION, OR INSTRUCTION SIGNS WHERE REQUIRED BY NEC, NFPA 70E, AND NFPA 79 PARAGRAPH 4.5.1, WHERE INDICATED, OR WHERE REASONABLY REQUIRED TO ASSURE SAFE OPERATION AND MAINTENANCE OF ELECTRICAL SYSTEMS AND OF THE ITEMS TO WHICH THEY CONNECT.
- THE DESIGN OF SAFETY SIGNS AND LABELS SHALL CONFORM TO ANSI Z535.4. SWITCHGEAR, PANELBOARDS, INDUSTRIAL CONTROL PANELS, MOTOR CONTROL CENTER, AND VFD SHALL BE FIELD MARKED TO WARN QUALIFIED PERSONS OF POTENTIAL ELECTRIC ARC HAZARDS. THE MARKING SHALL BE LOCATED SO AS TO BE CLEARLY VISIBLE TO QUALIFIED PERSONS BEFORE EXAMINATION, ADJUSTMENT, SERVICING, OR MAINTENANCE OF THE EQUIPMENT, IN CONFORMANCE WITH NEC ARTICLE 110.16.
- INSTALL ENGRAVED PLASTIC-LAMINATED INSTRUCTION SIGNS WITH APPROVED LEGEND WHERE INSTRUCTIONS OR EXPLANATIONS ARE NEEDED FOR SYSTEM OR EQUIPMENT OPERATION. INSTALL BUTYRATE SIGNS WITH METAL BACKING FOR OUTDOOR ITEMS.

END OF GENERAL ELECTRICAL REQUIREMENTS

LOW-VOLTAGE ELECTRICAL POWER CONDUCTORS AND CABLES

GENERAL

- THIS SECTION DETAILS GENERAL REQUIREMENTS FOR LOW VOLTAGE POWER AND CONTROL WIRE, CABLE AND ACCESSORIES, RATED UP TO 600 VOLTS AC.
- SHARING OF NEUTRAL WIRES FOR MULTIPLE SINGLE-PHASE CIRCUITS IS PROHIBITED. MC CABLE TO BE COLOR CODED BASED ON SYSTEM USE, AS FOLLOWS:
 - MC CABLE USED FOR BUILDING AUTOMATION SYSTEM (BAS) CONTROL WIRING: BLUE
 - MC CABLE USED FOR FIRE ALARM WIRING: RED
- IDENTIFY WIRE AND CABLE WITH ITS CIRCUIT NUMBER OR OTHER DESIGNATION INDICATED.
- CABLES SHALL BE DIRECTLY SUPPORTED TO BUILDING STRUCTURE AND INDEPENDENT OF OTHER PIPING, MECHANICAL EQUIPMENT OR CEILING SUPPORTS; CABLE SUPPORTS SHALL BE DEVICES SUCH AS "CADDY CLIPS" AND "BRIDLE RING" SUPPORTS AND "J HOOKS", LISTED FOR THE INTENDED USE.
- NYLON TIE WRAPS ARE NOT ACCEPTABLE FOR CABLE SUPPORTS; THEY ARE ACCEPTABLE FOR CABLE TRAINING AND BUNDLING.
- FOR EXISTING WORK:
 - DISCONNECT ABANDONED CIRCUITS AND REMOVE CIRCUIT WIRE AND CABLE; REMOVE ABANDONED BOXES WHEN WIRE AND CABLE SERVICING BOXES IS ABANDONED AND REMOVED; INSTALL BLANK COVERS FOR ABANDONED BOXES NOT REMOVED.
 - MAINTAIN ACCESS TO EXISTING WIRING CONNECTIONS REMAINING ACTIVE AND REQUIRING ACCESS.

CONDUCTORS AND CABLES

- COPPER BUILDING WIRE, RATED 600 V OR LESS, INSULATION: TYPE THHN OR TYPE XHHW-2 OR ROMEX WIRE.
- METAL-CLAD CABLE, TYPE MC, CONDUCTOR: COPPER WITH FULL-RATED GROUND CONDUCTOR.
- ALUMINUM BUILDING WIRE ARE NOT ALLOWED.
- MINIMUM CONDUCTOR SIZE IS 12 AWG FOR POWER AND LIGHTING CIRCUITS.
- MINIMUM CONDUCTOR SIZE IS 16 AWG FOR CLASS 2 AND 3 CONTROL CIRCUITS.

CONDUCTOR MATERIAL APPLICATIONS

- FEEDERS: SOLID FOR NO. 12 AWG AND SMALLER, STRANDED FOR NO. 10 AWG AND LARGER.
- BRANCH CIRCUITS: SOLID FOR NO. 10 AWG AND SMALLER, STRANDED FOR NO. 8 AWG AND LARGER, EXCEPT VFC CABLE, WHICH SHALL BE EXTRA-FLEXIBLE STRANDED.
- CONDUCTOR INSULATION AND MULTICONDUCTOR CABLE APPLICATIONS AND WIRING METHODS
- EXPOSED FEEDERS: TYPE THHN/THWN-2, SINGLE CONDUCTORS IN RACEWAY.
- EXPOSED BRANCH CIRCUITS: TYPE THHN/THWN-2, SINGLE CONDUCTORS IN RACEWAY, METAL-CLAD CABLE, TYPE MC.
- BRANCH CIRCUITS CONCEALED IN CEILINGS, WALLS, AND PARTITIONS METAL-CLAD CABLE, TYPE MC.
- VFC OUTPUT CIRCUITS: TYPE TC-ER CABLE WITH BRAIDED SHIELD.

TERMINATIONS - SPLICES AND TAPS UNDER 600 VOLTS:

- 10 AWG AND SMALLER: COPPER COMPRESSION TYPE OR TWIST-ON METAL SPRING-TYPE CONNECTORS WITH COLOR-CODED INSULATING NYLON COVERING. CONNECTORS FOR EXTERIOR AND DIRECT BURIAL USE SHALL BE LISTED FOR THE APPLICATION.
- 8 AWG AND LARGER: HYDRAULIC COMPRESSION CONNECTORS, MECHANICAL BOLTED PRESSURE TYPE, SUCH AS ILSCO CLEAR TAP, OR LISTED INSULATED TERMINAL BLOCKS.
- CABLE LUGS AND TERMINATIONS UNDER 600 VOLTS:
 - 10 AWG AND SMALLER: COPPER COMPRESSION TYPE WITH COLOR-CODED INSULATING NYLON COVERING.
 - 8 AWG AND LARGER: HYDRAULIC COMPRESSION CONNECTORS, PRE-FILLED WITH ANTI-OXIDANT COMPOUND.
 - LUG CONNECTIONS TO BUS BARS: PROVIDE WITH TIN-PLATED LUGS AND "BELLEVILLE" STYLE WASHERS.
 - TAPE ALL TERMINATIONS TO MATCH CABLE INSULATION RATING. C. "PUSH-ON" TYPE TERMINATORS AND SPLICE TAPE ARE NOT ACCEPTABLE.

WIRE COLOR

- FOR WIRE SIZES 6 AWG AND SMALLER, INSTALL WIRE COLORS IN ACCORDANCE WITH THE FOLLOWING:
 - BLACK AND RED FOR SINGLE PHASE CIRCUITS AT 120/240 VOLTS
 - BLACK, BLUE, AND RED FOR CIRCUITS AT 120/208 VOLTS SINGLE OR THREE PHASE
 - BROWN, ORANGE, AND YELLOW FOR CIRCUITS AT 277/480 VOLTS SINGLE OR THREE PHASE
- FOR WIRE SIZES 4AWG AND LARGER, IDENTIFY WIRE WITH COLORED TAPE AT TERMINALS, SPLICES AND BOXES. COLORS ARE AS FOLLOWS:
 - BLACK AND RED FOR SINGLE PHASE CIRCUITS AT 120/240 VOLTS
 - BLACK, BLUE, AND RED FOR CIRCUITS AT 120/208 VOLTS SINGLE OR THREE PHASE
 - BROWN, ORANGE, AND YELLOW FOR CIRCUITS AT 277/480 VOLTS SINGLE OR THREE PHASE
- NEUTRAL CONDUCTORS:
 - WHITE FOR 120/240 AND 120/208 VOLT CIRCUITS, AND GRAY WITH A YELLOW TRACER FOR 277/480 VOLT CIRCUITS
 - WHEN TWO OR MORE NEUTRALS ARE LOCATED IN ONE CONDUIT, INDIVIDUALLY IDENTIFY EACH WITH PROPER CIRCUIT NUMBER
 - WHEN A COMMON NEUTRAL IS USED A 200% RATED NEUTRAL SHALL BE PROVIDED

END OF SECTION LOW-VOLTAGE ELECTRICAL POWER CONDUCTORS AND CABLES

WIRING DEVICES

- PRODUCTS
 - TOGGLE SWITCHES: 120/277 V, 20 A
- DECORATOR-STYLE DEVICES: SQUARE FACE, 125 V, 20 A.
 - COMMERCIAL GRADE, GFCI AND WEATHER-RESISTANT DUPLEX RECEPTACLE.
 - COMMERCIAL GRADE SPLIT CONTROLLED RECEPTACLE
- WALL DIMMABLE SWITCH SENSOR LIGHT SWITCH, DUAL TECHNOLOGY.
- WALL PLATES:
 - MATERIAL FOR FINISHED SPACES: STEEL WITH BAKED ENAMEL
 - MATERIAL FOR UNFINISHED SPACES: GALVANIZED STEEL
 - MATERIAL FOR DAMP AND WET LOCATIONS: CAST ALUMINUM.
- FINISHES:
 - CONNECTED TO NORMAL POWER SYSTEM: WHITE
 - CONTROLLED RECEPTACLE: GREEN AND MARKED.

END OF SECTION WIRING DEVICES

GROUNDING AND BONDING FOR ELECTRICAL SYSTEMS

QUALITY ASSURANCE

- QUALITY STANDARD FOR GROUNDING AND BONDING MATERIALS AND EQUIPMENT: UL 467.

PRODUCTS

- CONDUCTORS:
 - INSULATED CONDUCTORS: COPPER OR TINNED-COPPER WIRE OR CABLE.
 - BARE COPPER CONDUCTORS:
 - BONDING CABLE.
 - BONDING CONDUCTOR.
 - BONDING JUMPER.
 - TINNED BONDING JUMPER.
- CONNECTORS:
 - WELDED.
 - CABLE-TO-CABLE CONNECTORS.
 - CONDUIT HUBS.
 - U-BOLT CLAMPS.

END OF GROUNDING AND BONDING FOR ELECTRICAL SYSTEMS

RACEWAYS AND BOXES FOR ELECTRICAL SYSTEMS

MATERIALS

- METAL CONDUITS
 - MINIMUM CONDUIT 1/2 INCH
 - PVC-COATED RIGID STEEL CONDUIT
 - EMT.
 - LFMC.
- FITTINGS:
 - EMT: STEEL; DIE CAST FITTING IS NOT ALLOWED. COMPRESSION TYPE, - EXPANSION FITTINGS OR PVC COATED.
- NONMETALLIC CONDUIT AND FITTINGS:
 - HDPE.
 - FITTINGS: MATCH CONDUIT.
- BOXES, ENCLOSURES, AND CABINETS:
 - METAL OUTLET AND DEVICE BOXES: FERROUS ALLOY
 - NONMETALLIC OUTLET AND DEVICE BOXES.
 - SMALL SHEET METAL PULL AND JUNCTION BOXES.
 - CAST-METAL ACCESS, PULL, AND JUNCTION BOXES.
 - BOX EXTENSIONS.
 - GANGABLE BOXES ARE PROHIBITED.
 - HINGED-COVER ENCLOSURES: METAL
 - CABINETS: GALVANIZED STEEL.

RACEWAY APPLICATION

- OUTDOORS:
 - EXPOSED: IMC.
 - CONCEALED, ABOVEGROUND: RNC, TYPE EPC-40-PVC.
 - UNDERGROUND: RNC, TYPE EPC-90-PVC
 - CONNECTION TO VIBRATING EQUIPMENT: LFMC
 - BOXES AND ENCLOSURES, ABOVEGROUND: TYPE 3R.
- INDOORS:
 - EXPOSED, NOT SUBJECT TO PHYSICAL DAMAGE: EMT
 - EXPOSED, NOT SUBJECT TO SEVERE PHYSICAL DAMAGE: EMT
 - EXPOSED AND SUBJECT TO SEVERE DAMAGE: IMC.
 - CONCEALED: EMT
 - CONNECTION TO VIBRATING EQUIPMENT: FMC, EXCEPT LFMC IN DAMP OR WET LOCATIONS.
 - DAMP OR WET LOCATIONS: IMC.
 - BOXES AND ENCLOSURES: TYPE 1, EXCEPT TYPE 4 STAINLESS STEEL IN COMMERCIAL KITCHENS AND DAMP OR WET LOCATIONS.
 - MINIMUM RACEWAY SIZE: 3/4-INCH TRADE SIZE.
- RACEWAY FITTINGS: COMPATIBLE WITH RACEWAYS AND SUITABLE FOR USE AND LOCATION.
 - RIGID AND INTERMEDIATE STEEL CONDUIT: THREADED RIGID STEEL CONDUIT FITTINGS.
 - PVC EXTERNALLY COATED, RIGID STEEL CONDUITS: FITTINGS LISTED FOR USE WITH THIS TYPE OF CONDUIT.
 - EMT: COMPRESSION, STEEL FITTINGS.
 - FLEXIBLE CONDUIT: FITTINGS LISTED FOR USE WITH FLEXIBLE CONDUIT.

END OF SECTION RACEWAYS AND BOXES FOR ELECTRICAL SYSTEMS

LED INTERIOR LIGHTING

- WARRANTY
 - MATERIALS AND WORKMANSHIP FOR LUMINAIRES: FIVE YEARS.
- PRODUCTS
 - OPERATING NOMINAL VOLTAGE: MVOT.
 - LUMINAIRE TYPES: REFER TO LIGHT FIXTURE SCHEDULE INDICATED ON THE DRAWING.
- MATERIALS
 - LIGHTING DIFFUSERS: AT LEAST 0.125 INCH PRISMATIC UV-STABILIZED ACRYLIC.
 - LED DRIVER: UL-LISTED 0-10V DIMMING
 - RATED LAMP LIFE OF 50,000 HOURS TO L70.
- HOUSINGS:
 - EXTRUDED-ALUMINUM HOUSING AND HEAT SINK.
 - POWDER-COAT PAINTED FINISH.
- METAL PARTS:
 - FREE OF BURRS AND SHARP CORNERS AND EDGES.
 - SHEET METAL COMPONENTS SHALL BE STEEL UNLESS OTHERWISE INDICATED.
 - FORM AND SUPPORT TO PREVENT WARPING AND SAGGING
- DOORS, FRAMES, AND OTHER INTERNAL ACCESS: SMOOTH OPERATING, FREE OF LIGHT LEAKAGE UNDER OPERATING CONDITIONS, AND DESIGNED TO PERMIT RELAMPING WITHOUT USE OF TOOLS. DESIGNED TO PREVENT FALLING ACCIDENTALLY DURING RELAMPING AND WHEN SECURED IN OPERATING POSITION.
- FACTORY-APPLIED LABELS: LABELS SHALL INCLUDE THE FOLLOWING LAMP CHARACTERISTICS:
 - "USE ONLY" AND INCLUDE SPECIFIC LAMP TYPE.
 - LAMP DIAMETER, SHAPE, SIZE, WATTAGE, AND COATING.
 - CCT AND CRI FOR ALL LUMINAIRES.
- LUMINAIRE SUPPORT:
 - SINGLE-STEM HANGERS: STEEL TUBING WITH SWIVEL BALL FITTINGS AND CEILING CANOPY.
 - WIRES: SOFT TEMPER, ZINC-COATED STEEL, 12 GAGE.
 - ROD HANGERS: CADMIUM-PLATED, THREADED STEEL ROD.
 - HOOK HANGERS: INTEGRATED ASSEMBLY MATCHED TO LUMINAIRE, LINE VOLTAGE, AND EQUIPMENT WITH THREADED ATTACHMENT, CORD, AND LOCKING-TYPE PLUG.

END OF SECTION LED INTERIOR LIGHTING